

Troubleshooting Guide

- mechanical -



Xperia™ V
LT25i



Xperia™ VC
LT25c

CONTENTS

| | | |
|----------|---|----------|
| 1 | Problem Areas | 5 |
| 1.1 | Power | 5 |
| 1.1.1 | Will not power on or will switch off randomly..... | 5 |
| 1.2 | Keys | 6 |
| 1.2.1 | Menu, Home and Multitask Keys | 6 |
| 1.2.2 | Volume Key | 6 |
| 1.2.3 | On/Off Key..... | 8 |
| 1.3 | Touch Screen | 11 |
| 1.3.1 | Touch Screen malfunction..... | 11 |
| 1.4 | Display | 12 |
| 1.4.1 | Graphics & Illumination | 12 |
| 1.5 | LED/Illumination..... | 13 |
| 1.5.1 | LED/Illumination | 13 |
| 1.6 | Speaker | 15 |
| 1.6.1 | Loudspeaker (LT25i Specific)..... | 15 |
| 1.6.2 | Loudspeaker (LT25c Specific)..... | 18 |
| 1.7 | Earphone | 21 |
| 1.7.1 | Ear Speaker..... | 21 |
| 1.8 | Microphone..... | 22 |
| 1.8.1 | Microphone (LT25i Specific)..... | 22 |
| 1.8.2 | Microphone (LT25c Specific)..... | 24 |
| 1.8.3 | Secondary Microphone..... | 27 |
| 1.9 | Vibrator | 29 |
| 1.9.1 | Vibrator not generating alerts | 29 |
| 1.10 | Camera..... | 31 |
| 1.10.1 | Camera defects..... | 31 |
| 1.10.2 | Video Call Camera defects..... | 32 |
| 1.11 | Flash LED | 34 |
| 1.11.1 | Flash LED not flashing..... | 34 |
| 1.12 | Bluetooth and WLAN | 36 |
| 1.12.1 | Bluetooth or WLAN connection failure (LT25i Specific) | 36 |
| 1.12.2 | Bluetooth or WLAN connection failure (LT25c Specific) | 37 |
| 1.13 | NFC (LT25i Specific) | 38 |
| 1.13.1 | NFC malfunctions..... | 38 |
| 1.14 | GPS | 39 |
| 1.14.1 | GPS malfunctions..... | 39 |
| 1.15 | Compass..... | 40 |
| 1.15.1 | Compass fails | 40 |
| 1.16 | Accelerometer | 41 |
| 1.16.1 | Accelerometer test fails | 41 |
| 1.17 | Gyroscope | 42 |
| 1.17.1 | Gyroscope test fails | 42 |

| | |
|---|-----------|
| 1.18 Ambient Light Sensor | 43 |
| 1.18.1 Light Sensor malfunctions | 43 |
| 1.19 Proximity Switch | 45 |
| 1.19.1 Proximity switch malfunctions | 45 |
| 1.20 Pressure Sensor | 47 |
| 1.20.1 Pressure Sensor test fails | 47 |
| 1.21 Water Resistance | 48 |
| 1.21.1 Water Resistance fails (LT25i Specific) | 48 |
| 1.21.2 Water Resistance fails (LT25c Specific) | 58 |
| 1.22 Real Time Clock | 69 |
| 1.22.1 Real time clock test fails | 69 |
| 1.23 Total call time | 70 |
| 1.23.1 Total call time fails | 70 |
| 1.24 External Memory | 71 |
| 1.24.1 Memory Card not detected | 71 |
| 1.25 Security | 72 |
| 1.25.1 Security fails | 72 |
| 1.26 FM Radio | 73 |
| 1.26.1 No/Poor FM Radio reception | 73 |
| 1.27 Battery Health test | 75 |
| 1.27.1 Battery Health test fails | 75 |
| 1.28 Flip Slider Counter | 76 |
| 1.28.1 Flip Slider Counter fails | 76 |
| 1.29 Verify Certificates | 77 |
| 1.29.1 Verify Certificates fails | 77 |
| 1.30 IrDA Test | 78 |
| 1.30.1 IrDA test fails | 78 |
| 1.31 TV-Out Test | 79 |
| 1.31.1 TV-Out test fails | 79 |
| 1.32 Network & Signal | 80 |
| 1.32.1 No/Poor signal (LT25i Specific) | 80 |
| 1.32.2 No/Poor signal (LT25c Specific) | 82 |
| 1.33 SIM | 86 |
| 1.33.1 SIM not detected | 86 |
| 1.33.2 Incorrect SIM indicated | 87 |
| 1.34 Charging | 88 |
| 1.34.1 Battery will not charge by USB connector | 88 |
| 1.34.2 Battery will not charge by Charge Pad | 88 |
| 1.35 HandsFree by Wire | 91 |
| 1.35.1 Connection to portable Handsfree fails | 91 |
| 1.36 Data Communication | 93 |
| 1.36.1 Data transfer via System Connector fails | 93 |
| 2 Revision History | 94 |

If there are no special indications of 'LT25i Specific' or 'LT25c Specific', LT25i and LT25c share the same trouble shooting guide as common sections, whose pictures are taken with LT25c.

Note: Touch Vendor ID Writing and LCD reset SW always must be performed for Touch/Display Front Cover Assy replacement or Board swap; 1257-2706 Trouble Shooting Application – mechanical.

1 Problem Areas

1.1 Power

1.1.1 Will not power on or will switch off randomly

Check:

Check whether the phone vibrates by pressing the on/off key.

Action:

If activation of the vibrator is detected, refer to section 1.4 'Display'.



Check:

Inspect the contact pads on the battery.

Action:

1. If dirty or oxidized – clean the pads.
2. If damaged – replace the battery.



Check:

Inspect the battery contact pins.

Action:

1. If dirty or oxidized – clean the contact pins.
2. If adhesive is detected on the contact pins, use an eraser to gently rub off the adhesive.
3. If damaged – replace Main PBA.



Check:

Inspect the on/off key.

Action:

Refer to section 1.2.3 'On/Off Key'.



Problem Areas

1.2 Keys

1.2.1 Menu, Home and Multitask Keys

Action:

1. Refer to section 1.3 'Touch Screen'.
2. Replace Main PBA.



1.2.2 Volume Key

Check:

Inspect the external area of the volume key.

Action:

If dirty – clean it.

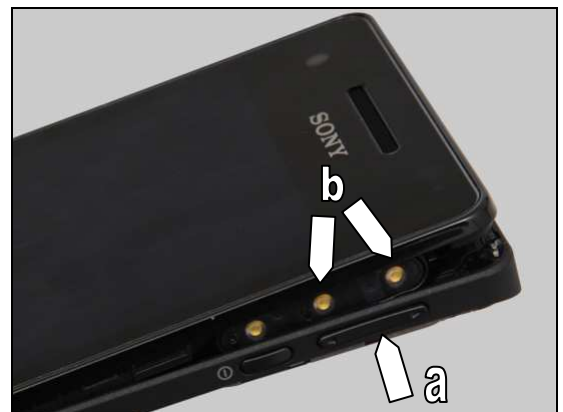


Check:

Inspect the volume key (a) and volume key switch (b).

Action:

1. If dirty – clean them.



2. If the volume key is damaged – replace the Side Key.



Problem Areas: Keys

3. If the volume key switch is damaged – replace the Side Key Flex PBA Frame Assy_WR.

Check:

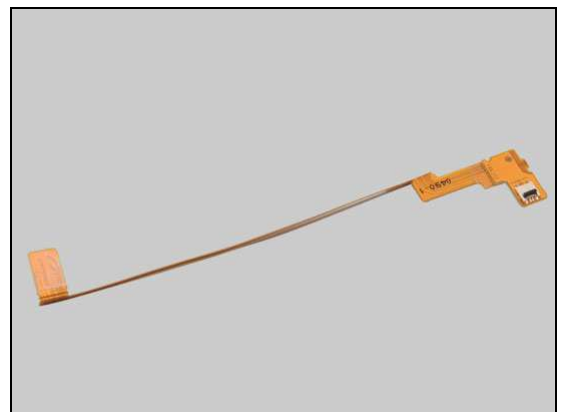
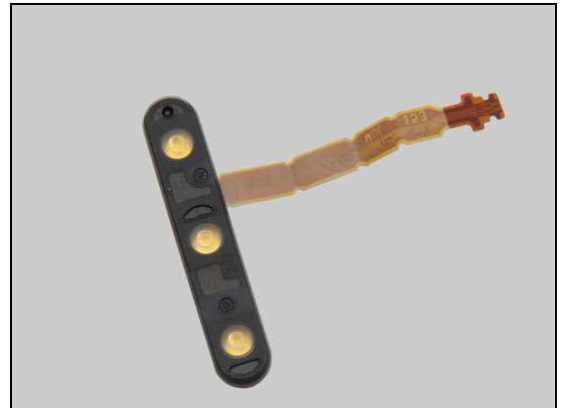
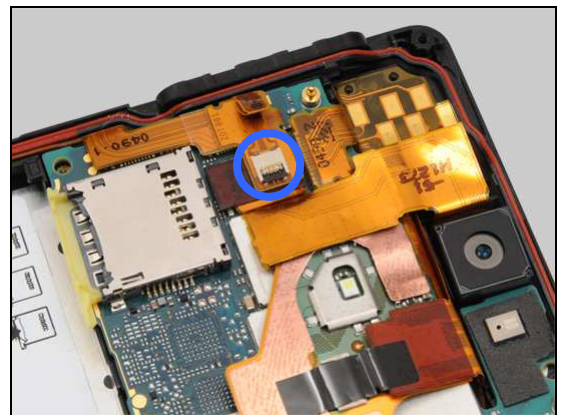
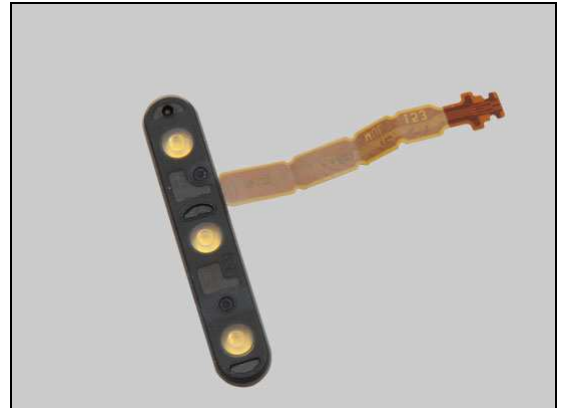
Inspect the ZIF connector of Side Key Flex PBA Frame Assy_WR to Relay Flex PBA Assy.

Action:

1. If not properly connected – disconnect and reconnect it.
2. If dirty or oxidized – clean it.

3. If the FPC of Side Key Flex PBA Frame Assy_WR is damaged – replace the Side Key Flex PBA Frame Assy_WR.

4. If the ZIF connector of the Relay Flex PBA Assy is damaged – replace the Relay Flex PBA Assy.



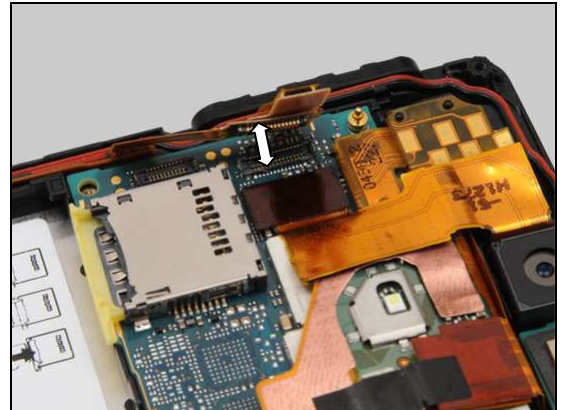
Problem Areas: Keys

Check:

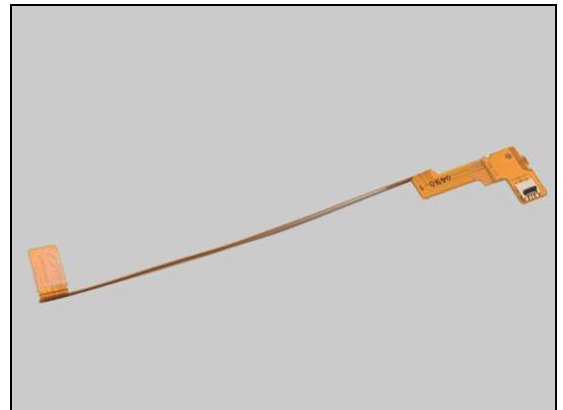
Inspect the BtB connector of Relay Flex PBA Assy to Main PBA.

Action:

1. If not properly connected – disconnect and reconnect it.
2. If dirty or oxidized – clean the both sides of the BtB connector.



3. If the BtB connector or the FPC of Relay Flex PBA Assy is damaged – replace the Relay Flex PBA Assy.
4. Replace Main PBA.



1.2.3 On/Off Key

Check:

Inspect the external area of the on/off key.

Action:

If dirty – clean it.



Check:

Inspect the on/off key (a) and on/off key switch (b).

Action:

1. If dirty – clean them.

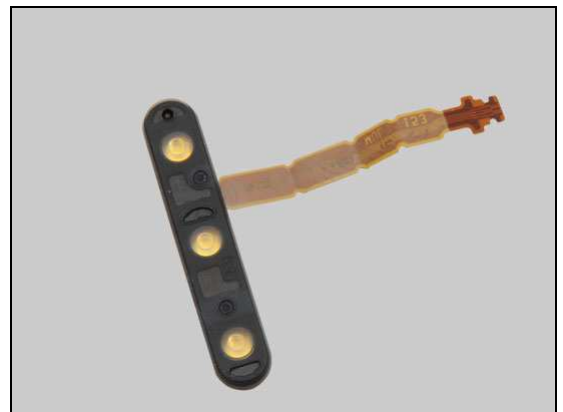


Problem Areas: Keys

2. If the on/off key is damaged – replace the Side Key.



3. If the on/off key switch is damaged – replace the Side Key Flex PBA Frame Assy_WR.

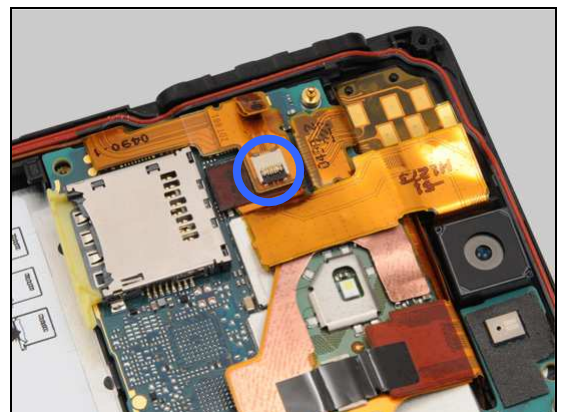


Check:

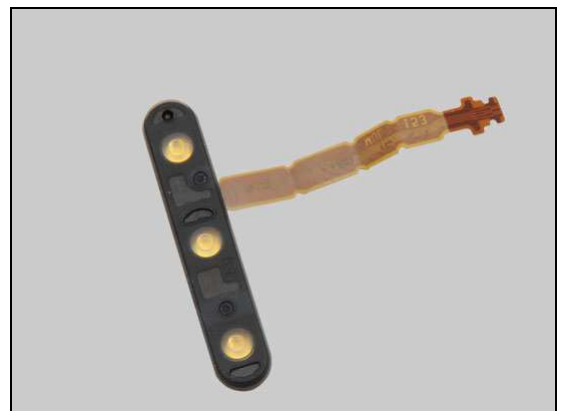
Inspect the ZIF connector of Side Key Flex PBA Frame Assy_WR to Relay Flex PBA Assy.

Action:

1. If not properly connected – disconnect and reconnect it.
2. If dirty or oxidized – clean it.

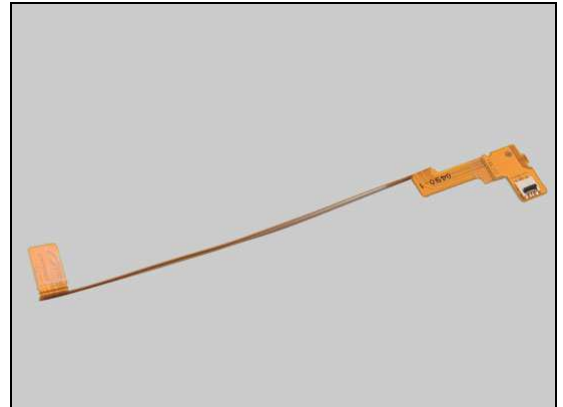


3. If the FPC of Side Key Flex PBA Frame Assy_WR is damaged – replace the Side Key Flex PBA Frame Assy_WR.



Problem Areas: Keys

4. If the ZIF connector of Relay Flex PBA Assy is damaged – replace the Relay Flex PBA Assy.

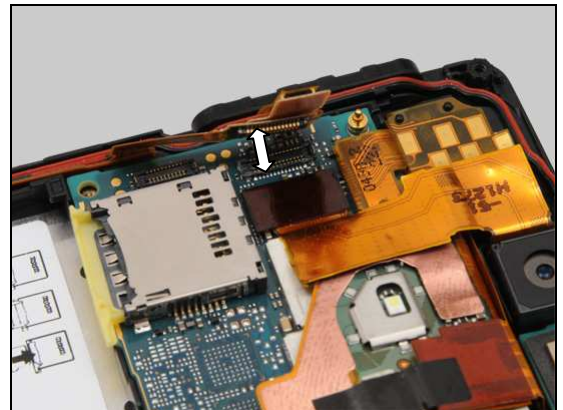


Check:

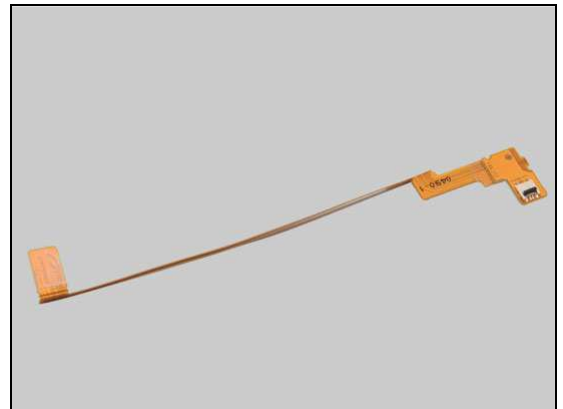
Inspect the BtB connector of Relay Flex PBA Assy to Main PBA.

Action:

1. If not properly connected – disconnect and reconnect it.
2. If dirty or oxidized – clean the both sides of the BtB connector.



3. If the BtB connector or the FPC of Relay Flex PBA Assy is damaged – replace the Relay Flex PBA Assy.
4. Replace Main PBA.



Problem Areas

1.3 Touch Screen

1.3.1 Touch Screen malfunction

Check:

Inspect the touch screen of the Touch/Display Front Cover Assy.

Action:

1. If dirty – clean it.



2. If scratched or damaged – replace the Touch/Display Front Cover Assy.

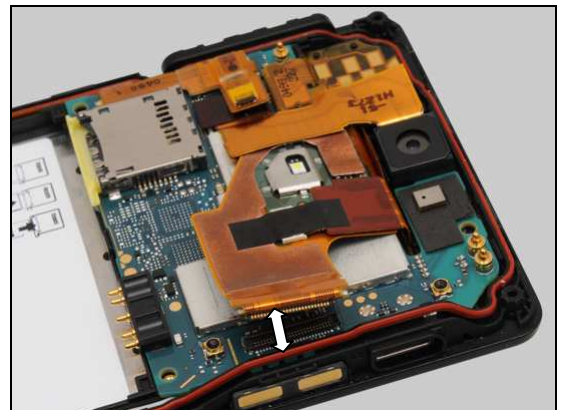


Check:

Inspect the BtB connector of display FPC to Main PBA.

Action:

1. If not properly connected – disconnect and reconnect it.
2. If dirty or oxidized – clean the both sides of the BtB connector.



3. If the BtB connector of display FPC is damaged – replace the Touch/Display Front Cover Assy.

4. Replace Main PBA.



Problem Areas

1.4 Display

1.4.1 Graphics & Illumination

Check:

Check whether the phone vibrates after the on/off key has been pressed.

Action:

If the activation described above is not detected, refer to section 1.1 'Power'.

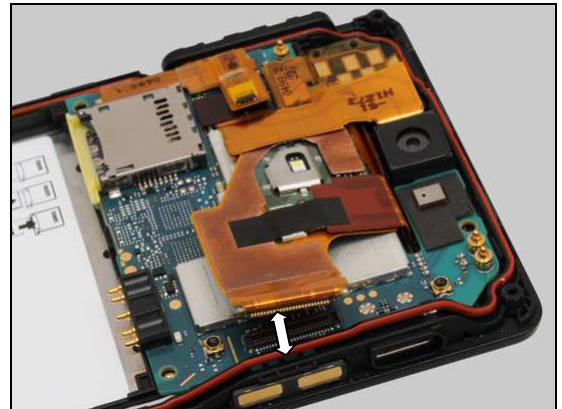


Check:

Inspect the BtB connector of display FPC to Main PBA.

Action:

1. If not properly connected – disconnect and reconnect it.
2. If dirty or oxidized – clean the both sides of the BtB connector.



3. If the BtB connector of display FPC is damaged – replace the Touch/Display Front Cover Assy.
4. Replace Main PBA.



Problem Areas

1.5 LED/Illumination

1.5.1 LED/Illumination

Check:

Inspect the external window area of the RGB LED on the Touch/Display Front Cover Assy.

Action:

1. If dirty – clean it.

2. If the external window area is damaged – replace the Touch/Display Front Cover Assy.

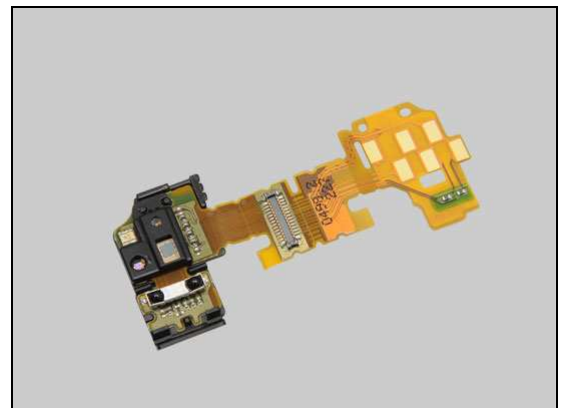
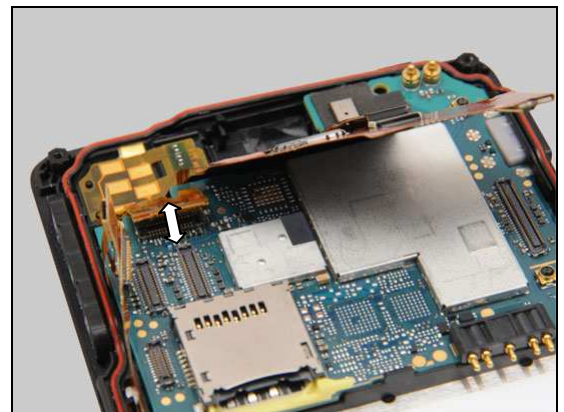
Check:

Inspect the BtB connector of the Jack Flex PBA Assy to Main PBA.

Action:

1. If not properly connected – disconnect and reconnect it.
2. If dirty or oxidized – clean the both sides of the BtB connector.

3. If the BtB connector or FPC of Jack Flex PBA Assy is damaged – replace the Jack Flex PBA Assy.



Problem Areas: LED/Illumination

Check:

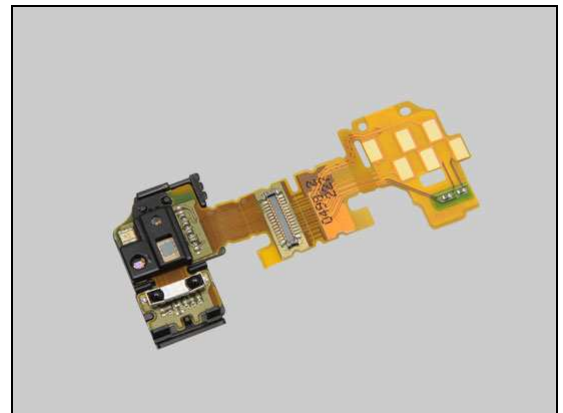
Inspect the RGB LED on the Jack Flex PBA Assy.

Action:

1. If dirty or clogged – clean it.



2. If the RGB LED is damaged – replace the Jack Flex PBA Assy.



Check:

Inspect the RGB LED light guide on the Touch/Display Front Cover Assy.

Action:

1. If dirty – clean it.



2. If damaged – replace the Touch/Display Front Cover Assy.

3. Replace Main PBA.



Problem Areas

1.6 Speaker

1.6.1 Loudspeaker (LT25i Specific)

Check:

Inspect the Loudspeaker's external port on the Cover Battery Assy.

Action:

1. If the Loudspeaker external port is clogged – clean it.

2. If the Loudspeaker external port is damaged – replace the Cover Battery Assy.



Check:

Inspect the Net Speaker on the Cover Rear Assy.

Action:

1. If dirty – clean it.

2. If damaged – replace the Net Speaker.



Problem Areas: Speaker

Check:

Inspect the contact pins of Loudspeaker and the contact pads on the Sub PBA Assy.

Action:

1. If dirty – clean them.

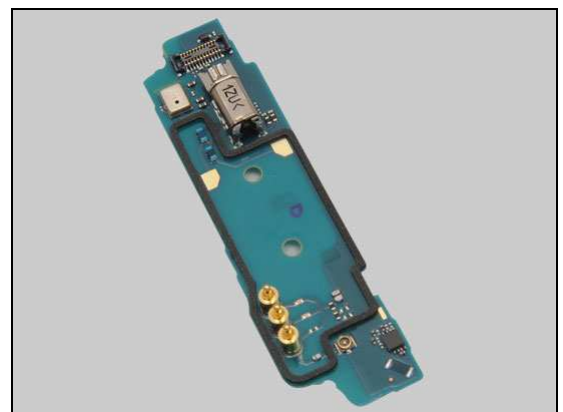
2. If the contact pins of Loudspeaker are damaged – replace the Loudspeaker.

Check:

Inspect the cushion on the Sub PBA Assy.

Action:

If the contact pads or the cushion on the Sub PBA Assy is damaged – replace the Sub PBA Assy.



Problem Areas: Speaker

Check:

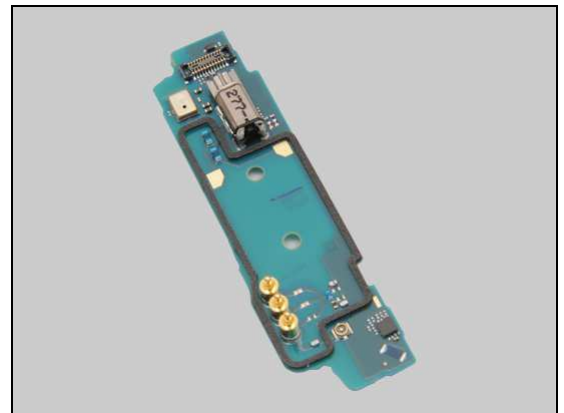
Inspect the BtB connector of Relay Flex PBA Assy to Sub PBA Assy.

Action:

1. If not properly connected – disconnect and reconnect it.
2. If dirty or oxidized – clean the both sides of the BtB connector.



3. If the BtB connector of Sub PBA Assy is damaged – replace the Sub PBA Assy.

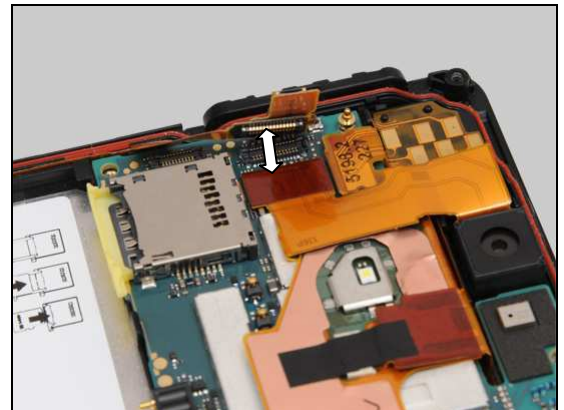


Check:

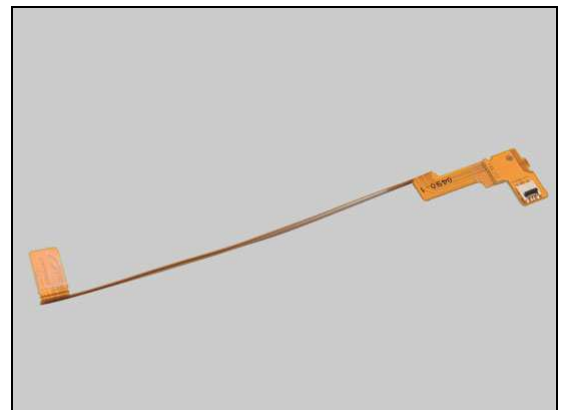
Inspect the BtB connector of the Relay Flex PBA Assy to Main PBA.

Action:

1. If not properly connected – disconnect and reconnect it.
2. If dirty or oxidized – clean the both sides of the BtB connector.



3. If the two BtB connectors or FPC of the Relay Flex PBA Assy is damaged – replace the Relay Flex PBA Assy.
4. Replace Main PBA.



Problem Areas: Speaker

1.6.2 Loudspeaker (LT25c Specific)

Check:

Inspect the Loudspeaker's external port on the Cover Bottom.

Action:

1. If the Loudspeaker external port is clogged – clean it.

2. If the Loudspeaker external port is damaged – replace the Cover Bottom.



Check:

Inspect the Net Speaker on the Cover Rear Assy.

Action:

1. If dirty – clean it.

2. If the Net Speaker is damaged – replace it.



Problem Areas: Speaker

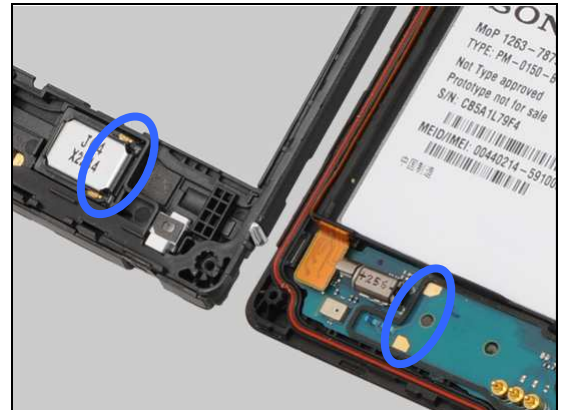
Check:

Inspect the contact pins of Loudspeaker and the contact pads on the Sub PBA Assy.

Action:

1. If dirty – clean them.

2. If the contact pins of Loudspeaker are damaged – replace the Loudspeaker.



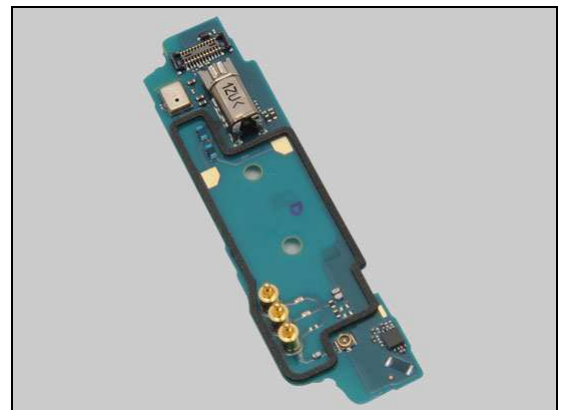
Check:

Inspect the cushion on the Sub PBA Assy.



Action:

If the contact pads or the cushion on the Sub PBA Assy is damaged – replace the Sub PBA Assy.



Problem Areas: Speaker

Check:

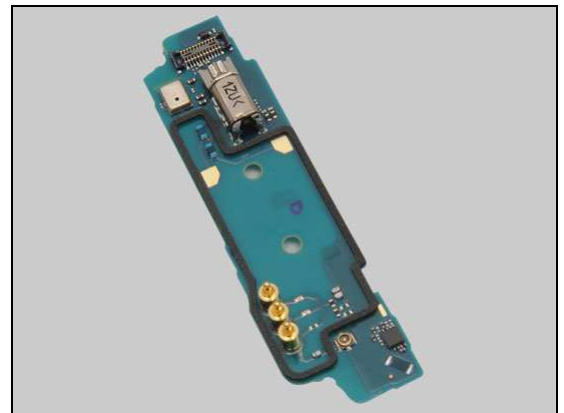
Inspect the BtB connector of Relay Flex PBA Assy to Sub PBA Assy.

Action:

1. If not properly connected – disconnect and reconnect it.
2. If dirty or oxidized – clean the both sides of the BtB connector.



3. If the BtB connector of Sub PBA Assy is damaged – replace the Sub PBA Assy.

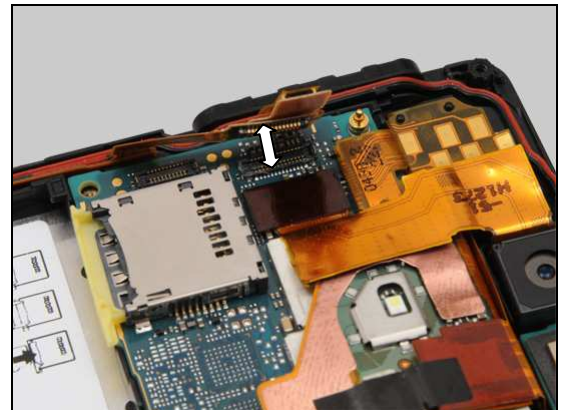


Check:

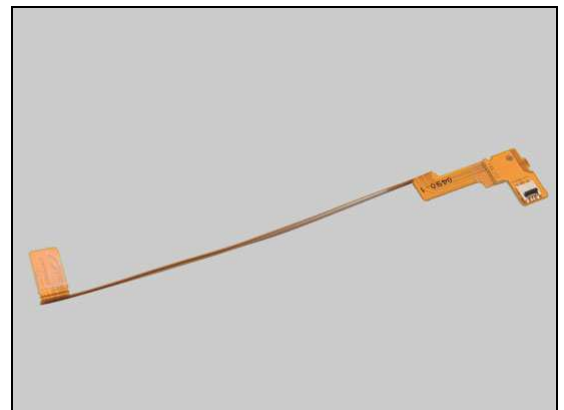
Inspect the BtB connector of the Relay Flex PBA Assy to Main PBA.

Action:

1. If not properly connected – disconnect and reconnect it.
2. If dirty or oxidized – clean the both sides of the BtB connector.



3. If the two BtB connectors or FPC of the Relay Flex PBA Assy is damaged – replace the Relay Flex PBA Assy.
4. Replace Main PBA.



Problem Areas

1.7 Earphone

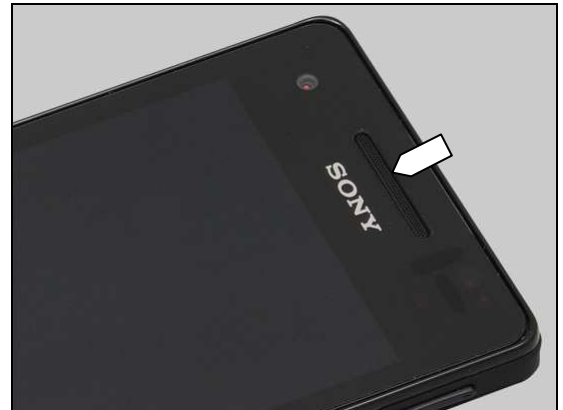
1.7.1 Ear Speaker

Check:

Inspect the Ear Speaker's external port on the Touch/Display Front Cover Assy.

Action:

1. If clogged – clean it.



2. If the port is damaged – replace the Touch/Display Front Cover Assy.



Check:

Inspect the contact pins of Ear Speaker and the contact pads on Main PBA.

Action:

1. If dirty – clean them.



2. If the contact pins are damaged – replace the Ear Speaker.

3. Replace Main PBA.



Problem Areas

1.8 Microphone

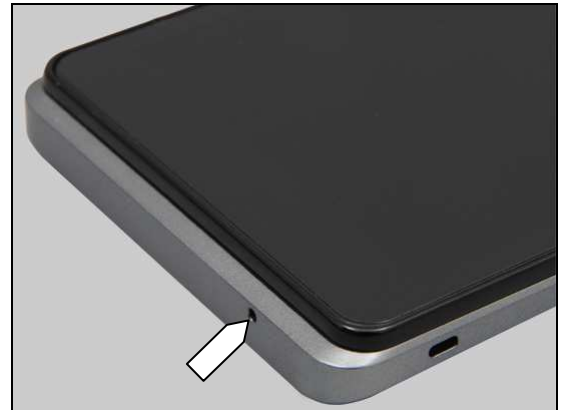
1.8.1 Microphone (LT25i Specific)

Check:

Inspect the microphone's external port on the Cover Rear Assy.

Action:

1. If clogged – clean it.



2. If the port is damaged – replace the Cover Rear Assy.



Check:

Inspect the microphone on Sub PBA Assy and the microphone hole and cushion on the Cover Rear Assy.

Action:

1. If dirty – clean them.



2. If the microphone hole or cushion is damaged – replace the Cover Rear Assy.



Problem Areas: Microphone

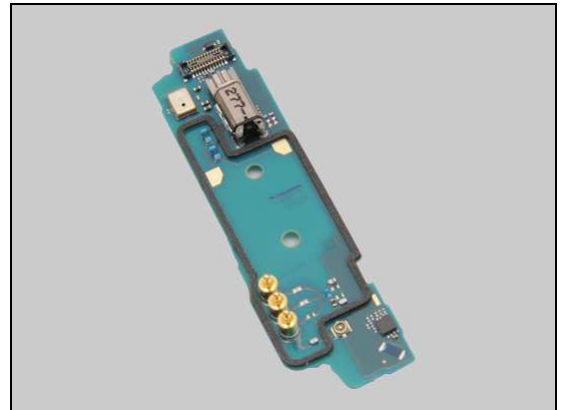
3. If the microphone on Sub PBA Assy is damaged – replace the Sub PBA Assy.

Check:

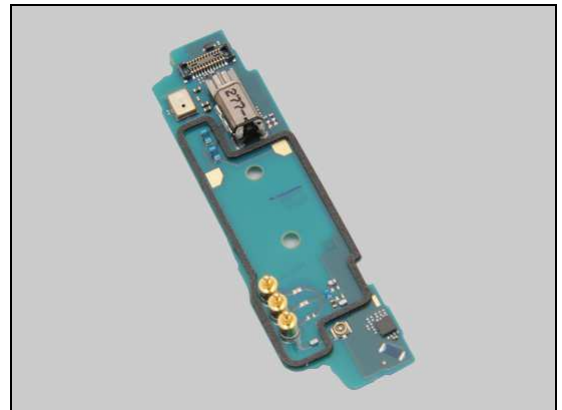
Inspect the BtB connector of Relay Flex PBA Assy to Sub PBA Assy.

Action:

1. If not properly connected – disconnect and reconnect it.
2. If dirty or oxidized – clean the both sides of the BtB connector.



3. If the BtB connector of Sub PBA Assy is damaged – replace the Sub PBA Assy.

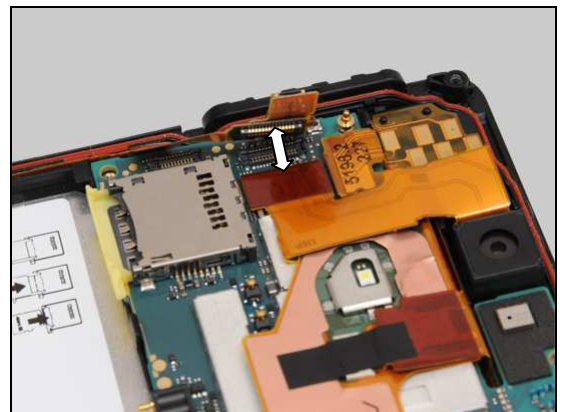


Check:

Inspect the BtB connector of Relay Flex PBA Assy to Main PBA.

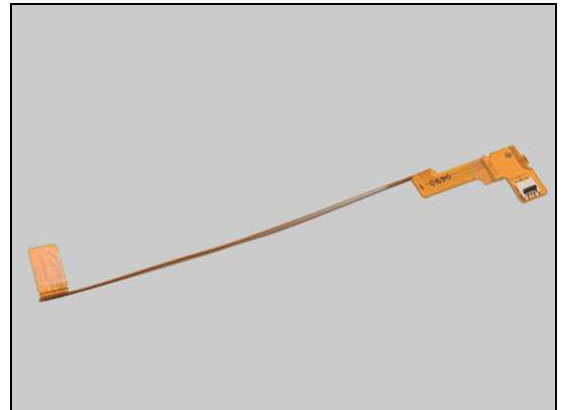
Action:

1. If not properly connected – disconnect and reconnect it.
2. If dirty or oxidized – clean the both sides of the BtB connector.



Problem Areas: Microphone

3. If the two BtB connectors or the FPC of Relay Flex PBA Assy is damaged – replace the Relay Flex PBA Assy.
4. Replace Main PBA.



1.8.2 Microphone (LT25c Specific)

Check:

Inspect the microphone's external port on the Cover Bottom.

Action:

1. If clogged – clean it.



2. If the port is damaged – replace the Cover Bottom.



Check:

Inspect the Cushion Sheet 1st Mic_WR.

Action:

1. If dirty – clean it.



Problem Areas: Microphone

2. If damaged – replace it.

Check:

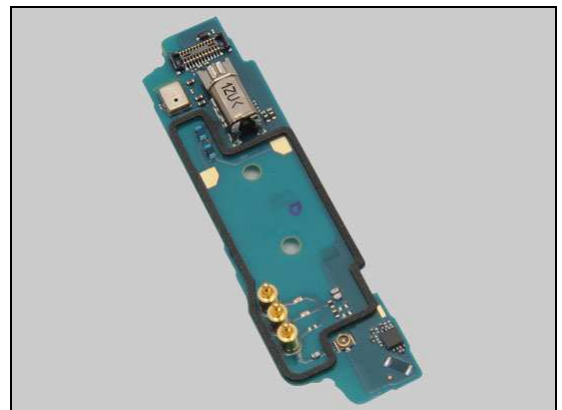
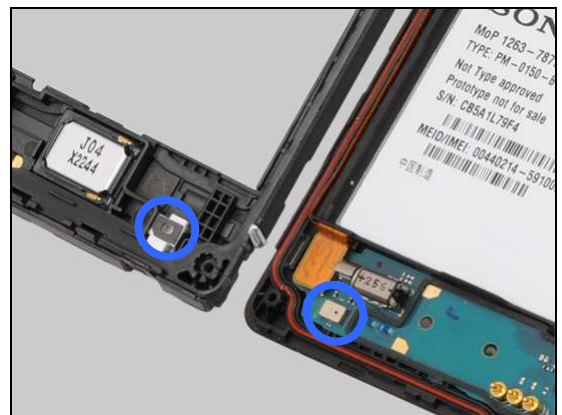
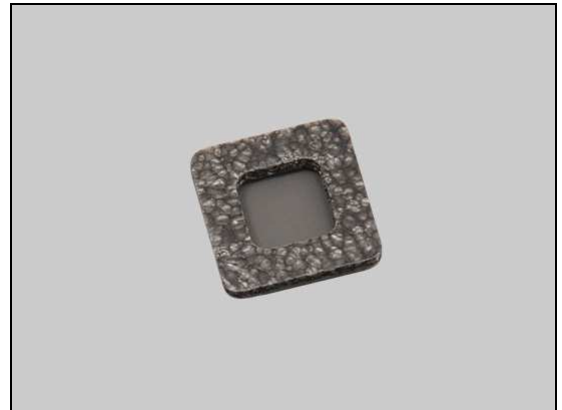
Inspect the microphone on Sub PBA Assy and the microphone hole and cushion on Cover Rear Assy.

Action:

1. If dirty – clean them.

2. If the microphone hole or cushion is damaged – replace the Cover Rear Assy.

3. If the microphone on Sub PBA Assy is damaged – replace the Sub PBA Assy.



Problem Areas: Microphone

Check:

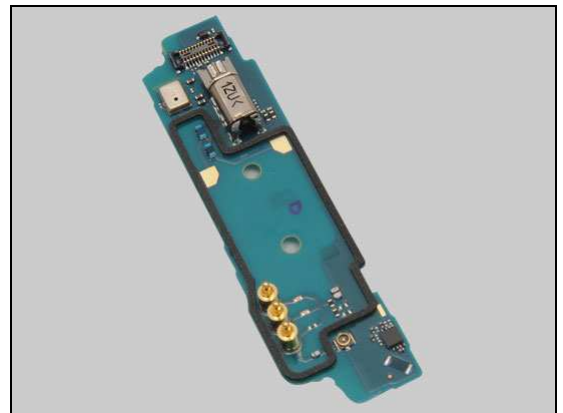
Inspect the BtB connector of Relay Flex PBA Assy to Sub PBA Assy.

Action:

1. If not properly connected – disconnect and reconnect it.
2. If dirty or oxidized – clean the both sides of the BtB connector.



3. If the BtB connector of the Sub PBA Assy is damaged – replace the Sub PBA Assy.

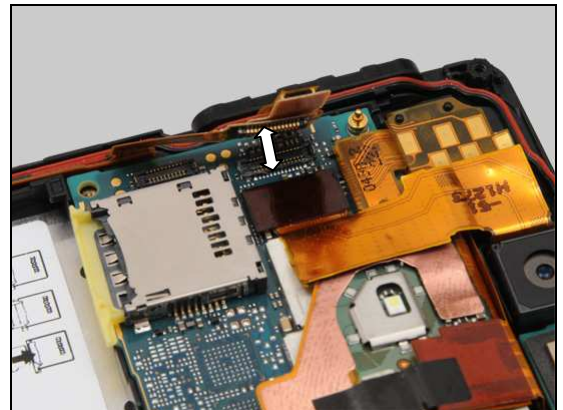


Check:

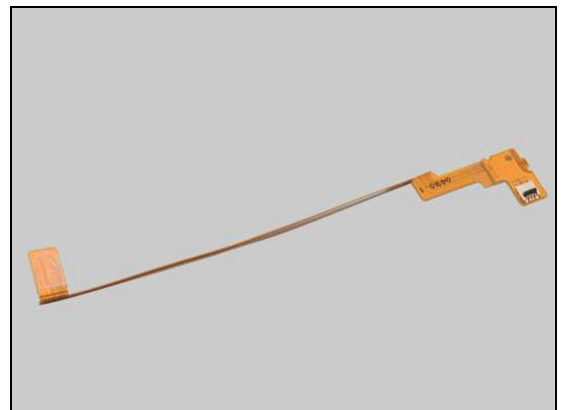
Inspect the BtB connector of the Relay Flex PBA Assy to Main PBA.

Action:

1. If not properly connected – disconnect and reconnect it.
2. If dirty or oxidized – clean the both sides of the BtB connector.



3. If the two BtB connectors or FPC of Relay Flex PBA Assy is damaged – replace the Relay Flex PBA Assy.
4. Replace Main PBA.



Problem Areas: Microphone

1.8.3 Secondary Microphone

Check:

Inspect the secondary microphone's external port on the Cover Battery Assy.

Action:

1. If clogged – clean it.



2. If the port is damaged – replace the Cover Battery Assy.



Check:

Inspect the Cushion 2nd Mic_WR on the Cover Rear Assy.

Action:

1. If dirty – clean it.



2. If damaged – replace the Cushion 2nd Mic_WR.



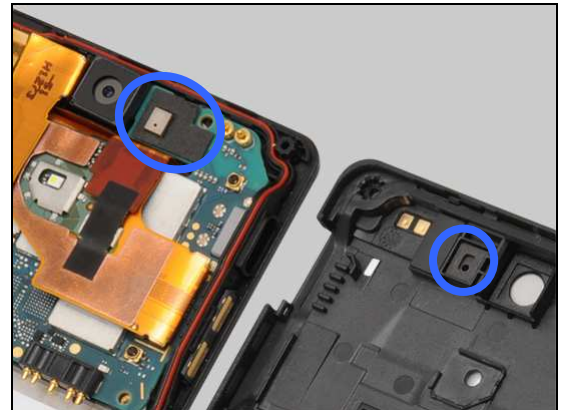
Problem Areas: Microphone

Check:

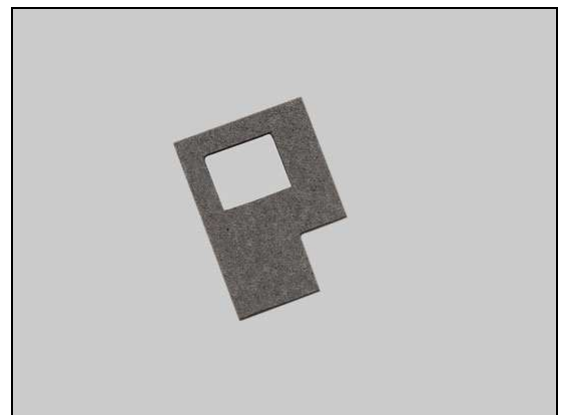
Inspect the Cushion MIC2 PCB on Main PBA and the secondary microphone hole and cushion on the Cover Rear Assy.

Action:

1. If dirty – clean them.



2. If the Cushion MIC2 PCB is damaged – replace it.



3. If the secondary microphone hole or cushion is damaged – replace the Cover Rear Assy.



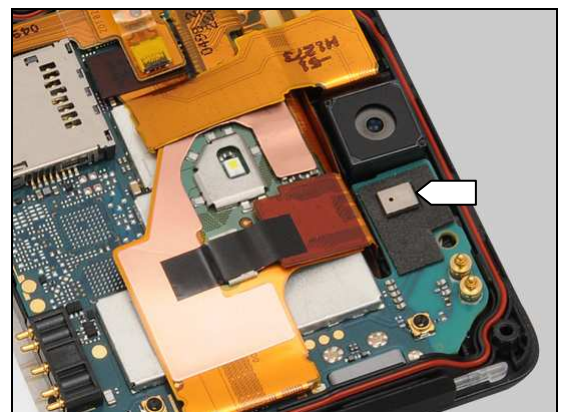
Check:

Inspect the secondary microphone on the Main PBA.

Action:

1. If dirty – clean it.

2. Replace Main PBA.



Problem Areas

1.9 Vibrator

1.9.1 Vibrator not generating alerts

Check:

Inspect the vibrator on Sub PBA Assy and the cushion of vibrator on the Cover Rear Assy.

Action:

1. If dirty – clean them.

2. If the cushion of vibrator is damaged – replace the Cover Rear Assy.

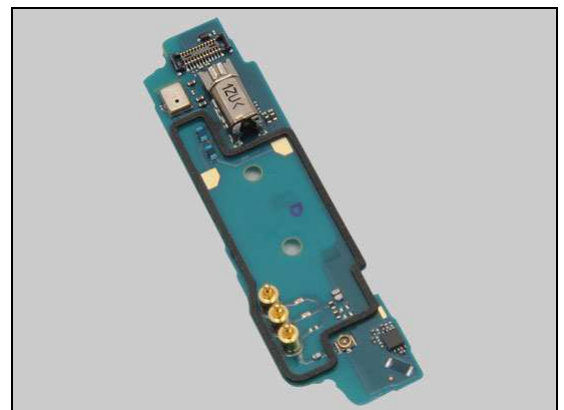
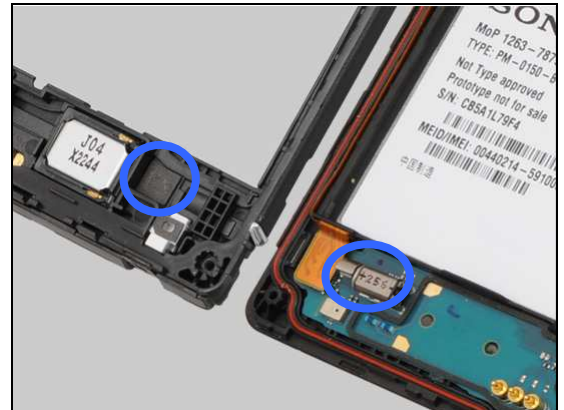
3. If the vibrator is damaged – replace the Sub PBA Assy.

Check:

Inspect the BtB connector of Relay Flex PBA Assy to Sub PBA Assy.

Action:

1. If not properly connected – disconnect and reconnect it.
2. If dirty or oxidized – clean the both sides of the BtB connector.



Problem Areas: Vibrator

3. If the BtB connector of Sub PBA Assy is damaged – replace the Sub PBA Assy.

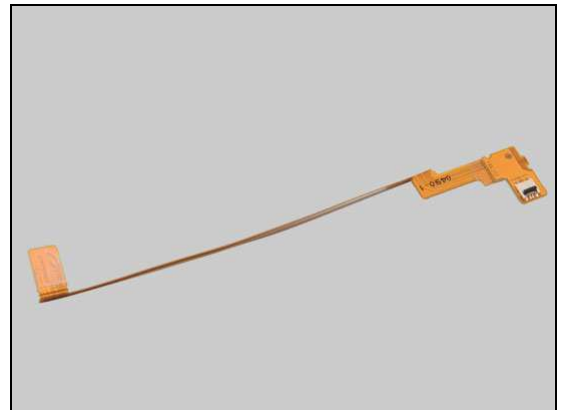
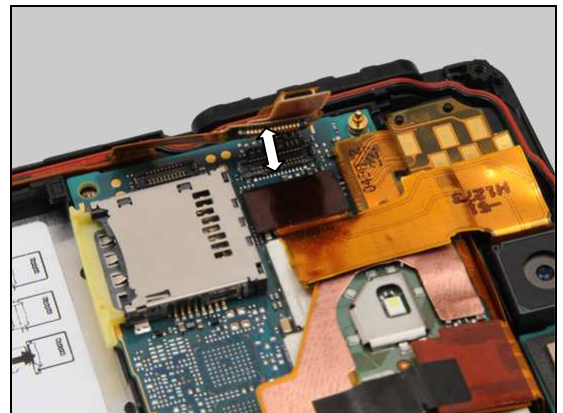
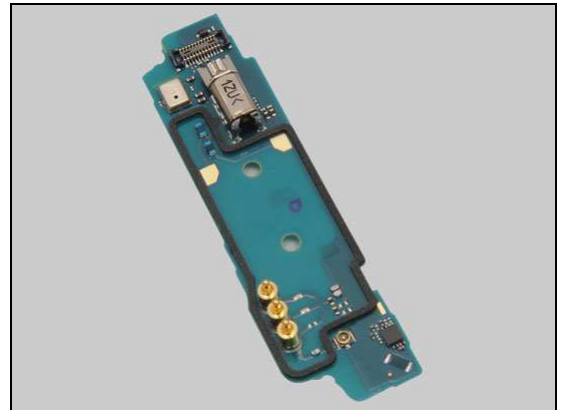
Check:

Inspect the BtB connector of Relay Flex PBA Assy to Main PBA.

Action:

1. If not properly connected – disconnect and reconnect it.
2. If dirty or oxidized – clean the both sides of the BtB connector.

3. If the two BtB connectors or the FPC of Relay Flex PBA Assy is damaged – replace the Relay Flex PBA Assy.
4. Replace Main PBA.



Problem Areas

1.10 Camera

1.10.1 Camera defects

Check:

Inspect the external area of camera window.

Action:

1. If dirty – clean it.



2. If scratched or damaged – replace the Cover Rear Assy.



Check:

Inspect the main camera cushion on the Cover Rear Assy.

Action:

1. If dirty – clean it.



2. If the main camera cushion is damaged – replace the Cover Rear Assy.



Problem Areas: Camera

Check:

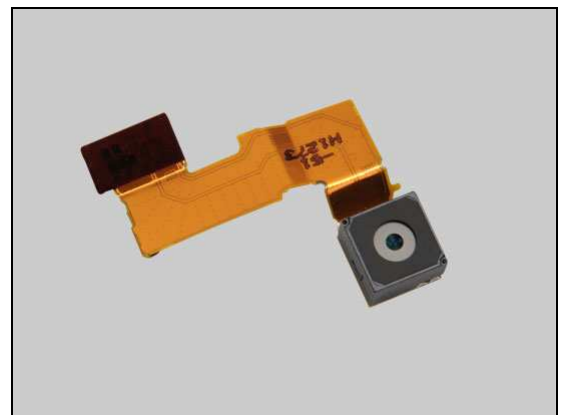
Inspect the BtB connector of Main Camera to Main PBA.

Action:

1. If not properly connected – disconnect and reconnect it.
2. If dirty or oxidized – clean the both sides of the BtB connector.



3. If the BtB connector or the Main Camera is damaged – replace the Main Camera.
4. Replace Main PBA.



1.10.2 Video Call Camera defects

Check:

Inspect the external area of the video camera window.

Action:

1. If dirty – clean it.
2. If scratched or damaged – replace the Touch/Display Front Cover Assy.



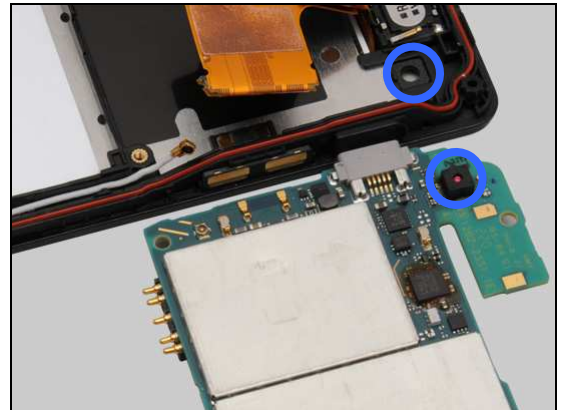
Problem Areas: Camera

Check:

Inspect the video camera on the Main PBA and the video camera cushion on the Touch/Display Front Cover Assy.

Action:

1. If dirty – clean them.
2. If the video camera cushion is damaged – replace the Touch/Display Front Cover Assy.
3. Replace Main PBA.



Problem Areas

1.11 Flash LED

1.11.1 Flash LED not flashing

Check:

Inspect the external area of the flash LED window.

Action:

1. If dirty – clean it.



2. If scratched or damaged – replace the Cover Rear Assy.

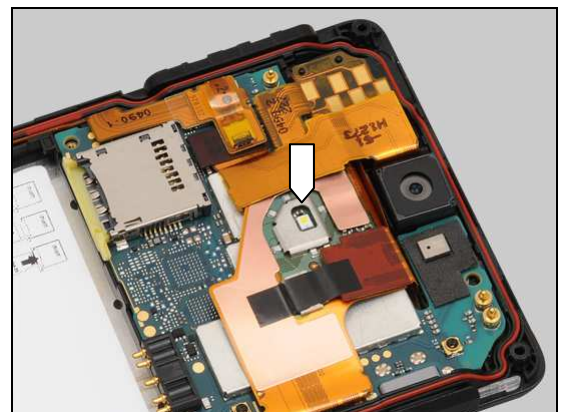


Check:

Inspect the flash LED on the display FPC.

Action:

- If dirty – clean it.

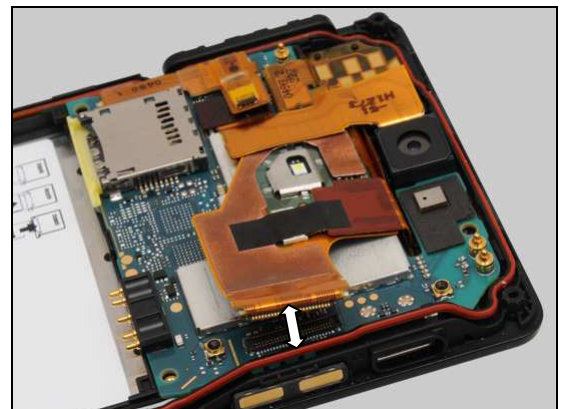


Check:

Inspect the BtB connector of display FPC to Main PBA.

Action:

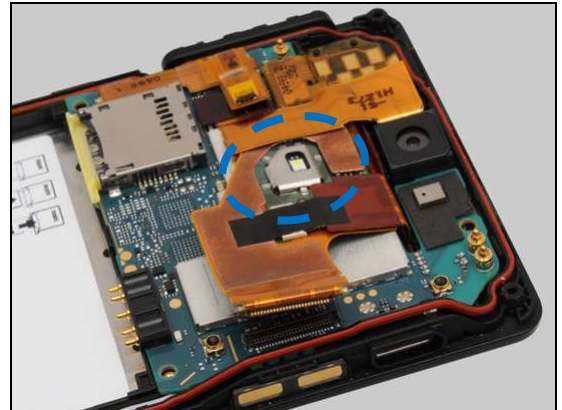
1. If not properly connected – disconnect and reconnect it.
2. If dirty or oxidized – clean the both sides of the BtB connector.



Problem Areas: Flash LED

Check:

Inspect the display FPC as shown.



Action:

1. If the flash LED, the BtB connector or display FPC is damaged – replace the Touch/Display Front Cover Assy.

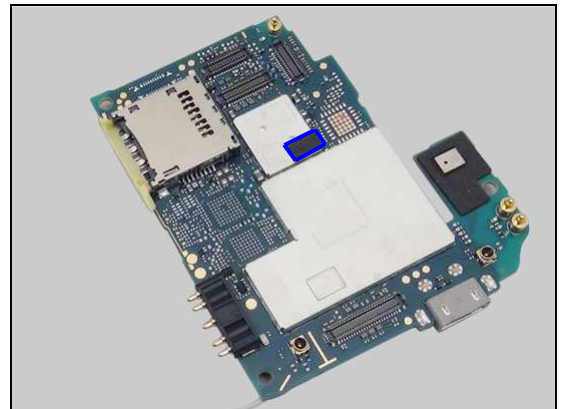


Check:

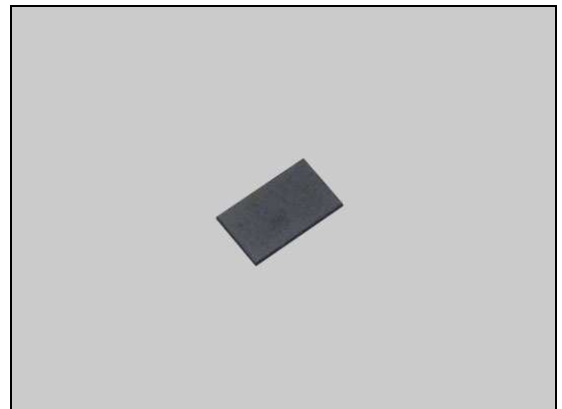
Inspect the shielding can area as indicated by the blue rectangle.

Action:

1. If there is no Sheet Shield NonCell attached – ALWAYS attach it on its proper position.



2. If the Sheet Shield NonCell is damaged – replace it.
3. Replace Main PBA.



Problem Areas

1.12 Bluetooth and WLAN

1.12.1 Bluetooth or WLAN connection failure (LT25i Specific)

Check:

Inspect the WLAN and Bluetooth antenna on the Cover Rear Assy.



Action:

If the antenna is damaged – replace the Cover Rear Assy.

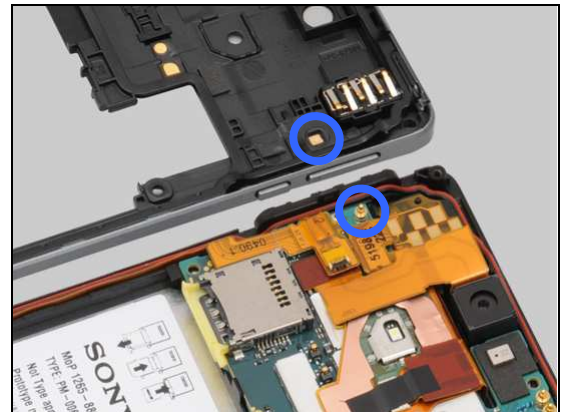


Check:

Inspect the WLAN and Bluetooth antenna contact pad on Cover Rear Assy and the contact pin on Main PBA.

Action:

1. If dirty or oxidized – clean the pad and pin.



2. If the contact pad is damaged – replace the Cover Rear Assy.

3. Replace Main PBA.



Problem Areas: Bluetooth and WLAN

1.12.2 Bluetooth or WLAN connection failure (LT25c Specific)

Check:

Inspect the WLAN and Bluetooth antenna on the Cover Rear Assy.



Action:

If the antenna is damaged – replace the Cover Rear Assy.

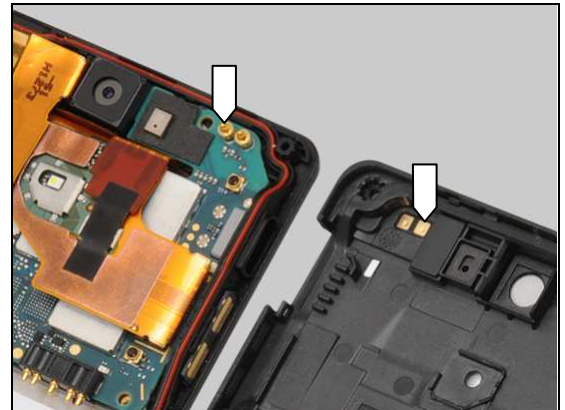


Check:

Inspect the WLAN and Bluetooth antenna contact pad on Cover Rear Assy and the contact pin on Main PBA.

Action:

1. If dirty or oxidized – clean the pad and pin.



2. If the contact pad is damaged – replace the Cover Rear Assy.

3. Replace Main PBA.



Problem Areas

1.13 NFC (LT25i Specific)

1.13.1 NFC malfunctions

Check:

Inspect the NFC antenna on the Cover Rear Assy.



Action:

If the antenna is damaged – replace the Cover Rear Assy.



Check:

Inspect the NFC antenna contact pads on the Cover Rear Assy and the contact pins on the Main PBA.

Action:

1. If dirty or oxidized – clean the pads and pins.



2. If the contact pads are damaged – replace the Cover Rear Assy.

3. Replace Main PBA.



Problem Areas

1.14 GPS

1.14.1 GPS malfunctions

Check:

Inspect the GPS antenna on the Cover Rear Assy.



Action:

If the antenna is damaged – replace the Cover Rear Assy.

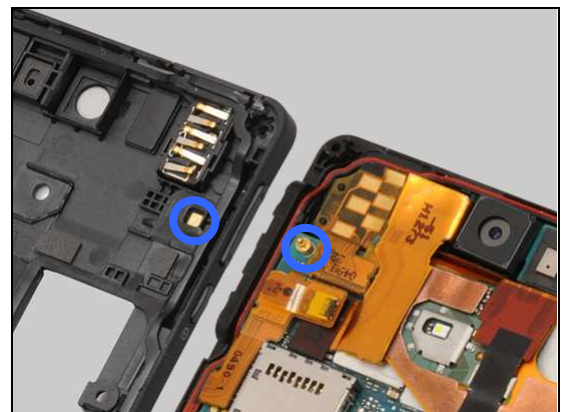


Check:

Inspect the GPS antenna contact pad on Cover Rear Assy and the contact pin on Main PBA.

Action:

1. If dirty or oxidized – clean the pad and pin.



2. If the contact pad is damaged – replace the Cover Rear Assy.

3. Replace Main PBA.



Problem Areas

1.15 Compass

1.15.1 Compass fails

Action:

Replace Main PBA.

Problem Areas

1.16 Accelerometer

1.16.1 Accelerometer test fails

Action:

Replace Main PBA.

Problem Areas

1.17 Gyroscope

1.17.1 Gyroscope test fails

Action:

Replace Main PBA.

Problem Areas

1.18 Ambient Light Sensor

1.18.1 Light Sensor malfunctions

Check:

Inspect the external window area of light sensor on the Touch/Display Front Cover Assy.

Action:

1. If dirty – clean it.



2. If scratched or damaged – replace the Touch/Display Front Cover Assy.



Check:

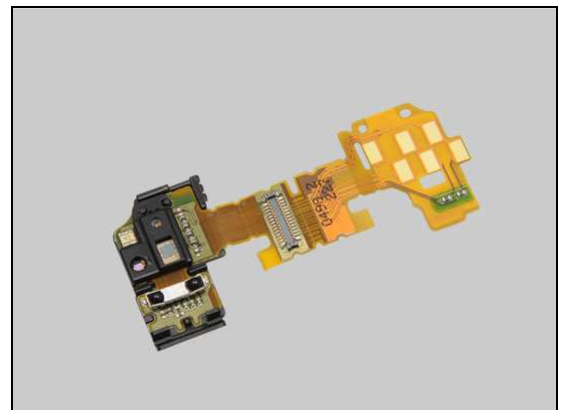
Inspect the light sensor on the Jack Flex PBA Assy.

Action:

1. If dirty or clogged – clean it.



2. If damaged – replace the Jack Flex PBA Assy.



Problem Areas: Ambient Light Sensor

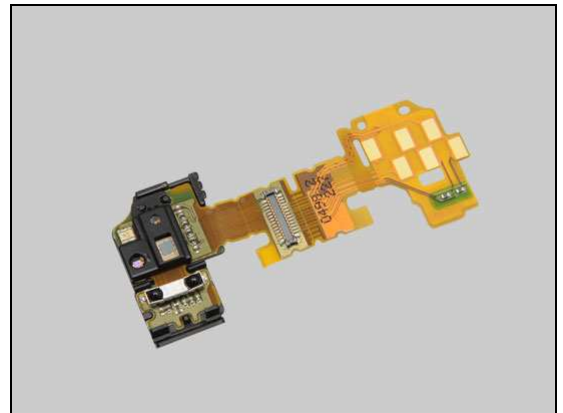
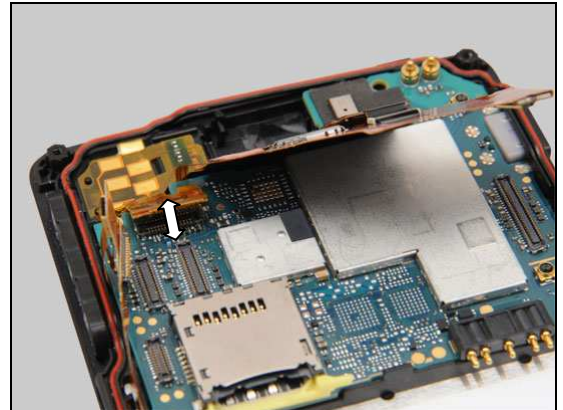
Check:

Inspect the BtB connector of the Jack Flex PBA Assy to Main PBA.

Action:

1. If not properly connected – disconnect and reconnect it.
2. If dirty or oxidized – clean the both sides of the BtB connector.

3. If the BtB connector or FPC of the Jack Flex PBA Assy is damaged – replace the Jack Flex PBA Assy.
4. Replace Main PBA.



Problem Areas

1.19 Proximity Switch

1.19.1 Proximity switch malfunctions

Check:

Inspect the proximity switch and the proximity sensor window area on the Touch/Display Front Cover Assy.

Action:

1. If dirty – clean it.

2. If scratched or damaged – replace the Touch/Display Front Cover Assy.

Check:

Inspect the proximity sensor and proximity switch on the Jack Flex PBA Assy.

Action:

If dirty or clogged – clean it.

Check:

Inspect the bracket of the proximity sensor.



Problem Areas: Proximity Switch

Action:

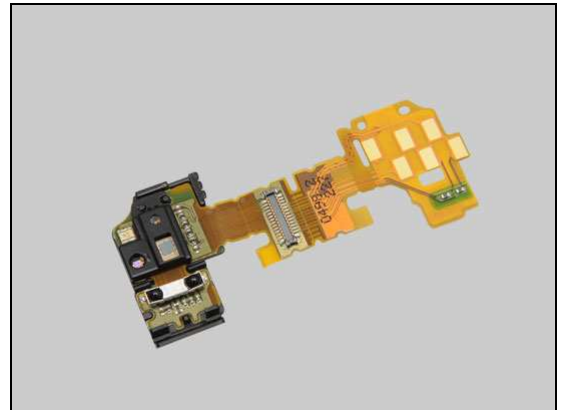
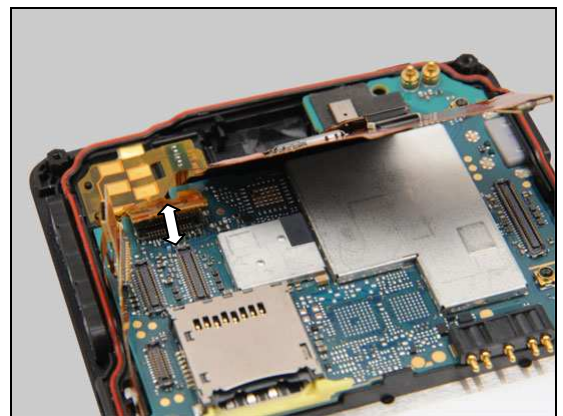
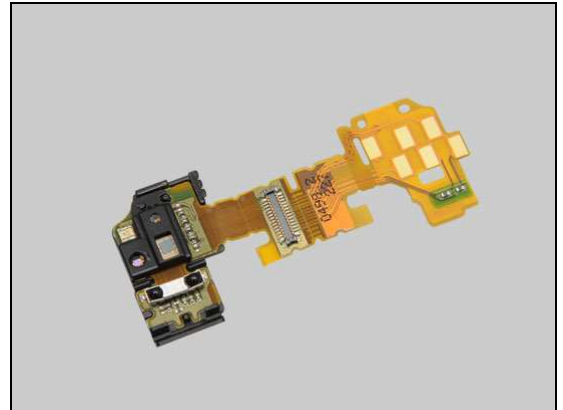
If the proximity sensor, proximity switch or the bracket of proximity sensor is damaged – replace the Jack Flex PBA Assy.

Check:

Inspect the BtB connector of Jack Flex PBA Assy to Main PBA.

Action:

1. If not properly connected – disconnect and reconnect it.
2. If dirty or oxidized – clean the both sides of the BtB connector.
3. If the BtB connector or FPC of the Jack Flex PBA Assy is damaged – replace the Jack Flex PBA Assy.
4. Replace Main PBA.



Problem Areas

1.20 Pressure Sensor

1.20.1 Pressure Sensor test fails

N/A. No pressure sensor on Main PBA.

Problem Areas

1.21 Water Resistance

1.21.1 Water Resistance fails (LT25i Specific)

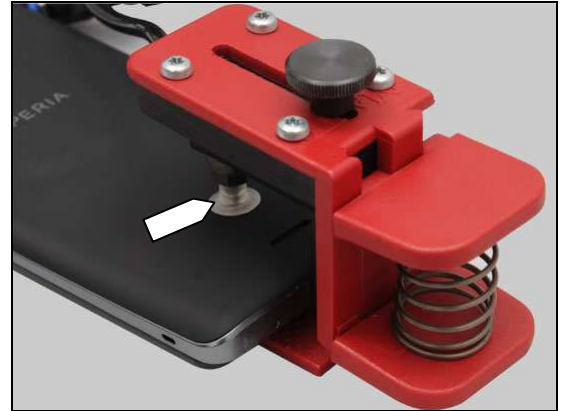
Check:

Inspect that the Vacuum Cup is correctly mounted to the ventilation hole.

Action:

If not properly mounted – reseal the ventilation hole with the Vacuum Cup.

Run the Water Resistance Test again!

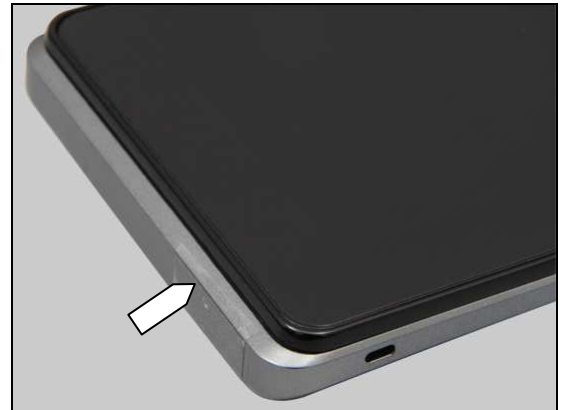


Check:

Inspect that the primary microphone is properly sealed with tape.

Action:

If not properly sealed – reseal the primary microphone with tape.



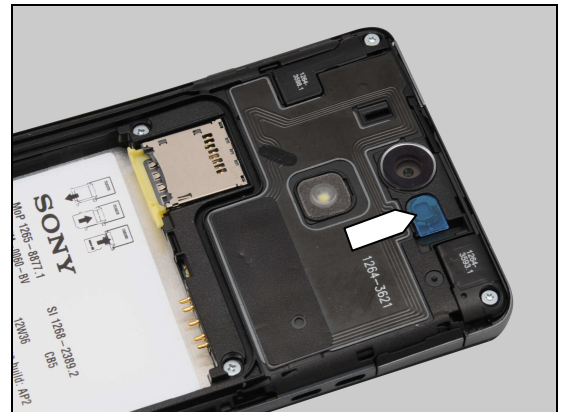
Check:

Inspect that the secondary microphone is properly sealed with the Protection Film 2nd Mic (1266-0740).

Action:

1. If not properly sealed – reseal the secondary microphone with the Protection Film 2nd Mic (1266-0740).
2. If the Cushion 2nd Mic_WR (1262-0562) is dirty or damaged – replace it and do **not** peel off its protection film.

Run the Water Resistance Test again!



Check:

Inspect the equipment:

Check all tubing connections as arrows shown.

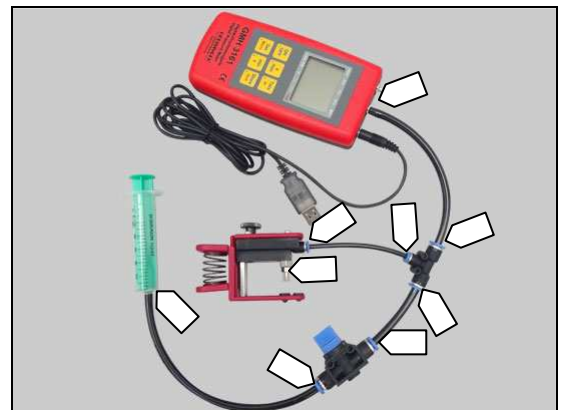
Check the Vacuum Cup sealing area and the syringe.

Check for dirt, cracks, damages.

Check direction on the valve.

Action:

1. If any bad connection – remount the equipment.
2. If damaged – replace the equipment.



Problem Areas: Water Resistance

3. If the arrow on the valve is not pointing to the tube connected to syringe – reconnect it in the correct direction.

Run the Water Resistance Test again!



Check:

Inspect the Cap Audio Jack.

Action:

1. If dirty – clean it.
2. If not properly assembled – disassemble and reassemble.



3. If the Cap Audio Jack is damaged – replace it.

Run the Water Resistance Test again!



Check:

Inspect the Cap Micro USB.

Action:

1. If dirty – clean it.
2. If not properly assembled – disassemble and reassemble.



Problem Areas: Water Resistance

3. If the Cap Micro USB is damaged – replace it.

Run the Water Resistance Test again!

Check:

Inspect the Cover Battery Assy.

Action:

1. If not properly assembled – disassemble and reassemble it.
2. If sealing gasket is dirty – clean it.

3. If the sealing gasket, water resistant sheet or hooks are damaged – replace the Cover Battery Assy.

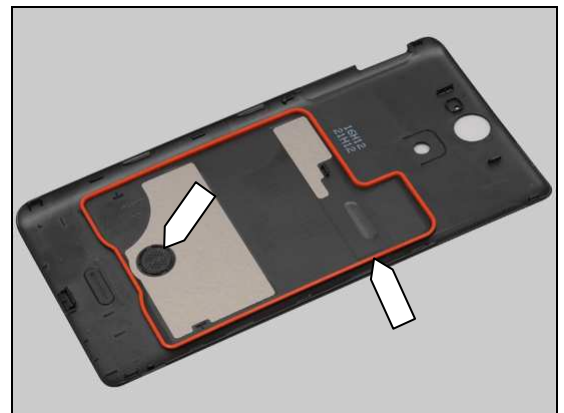
Run the Water Resistance Test again!

Check:

Inspect the battery.

Action:

1. If not properly assembled – disassemble and reassemble it.



Problem Areas: Water Resistance

2. If the battery is damaged or out of shape – replace it.

Run the Water Resistance Test again!



Check:

Inspect the cavity of the battery cover sealing gasket on the Cover Rear Assy.

Action:

1. If dirty – clean it.



2. If the cavity is damaged – replace the Cover Rear Assy.

Run the Water Resistance Test again!



Check:

Inspect the Screw Len:3.2 Diam:1.4 M.

Action:

2012- If not properly assembled – reassemble them.

Do not reuse in case of disassembling!



Problem Areas: Water Resistance

2. If the Screw Len:3.2 Diam:1.4 M is damaged – replace it.

Run the Water Resistance Test again!

Check:

Inspect the Screw Len:5.0 Diam:1.4.

Action:

2012- If not properly assembled – reassemble them.

Do not reuse in case of disassembling!



2. If the Screw Len:5.0 Diam:1.4 is damaged – replace it.

Run the Water Resistance Test again!



Check:

Inspect the Ant Diversity Flex.

Problem Areas: Water Resistance

Action:

1. If suspect that the Ant Diversity Flex is not securely attached – replace it.
2. If inspect that the Ant Diversity Flex is damaged – replace it.

Run the Water Resistance Test again!

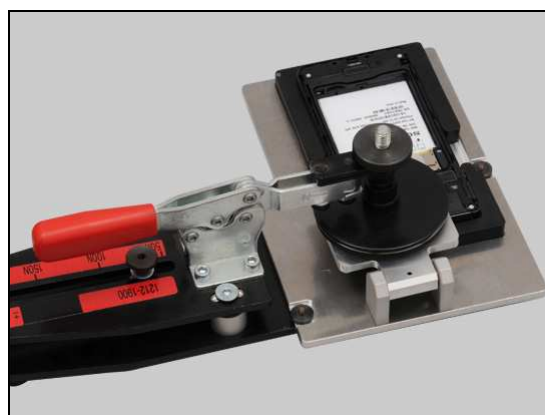


Action:

If suspect that the newly replaced Ant Diversity Flex is not securely attached – press it again with the Sub Antenna Press Insert and Pressure Tool.

This action is only applicable for newly replaced Ant Diversity Flex.

If this action failed, replace a new Ant Diversity Flex.



Run the Water Resistance Test again!

Check:

Inspect the Main Gasket.

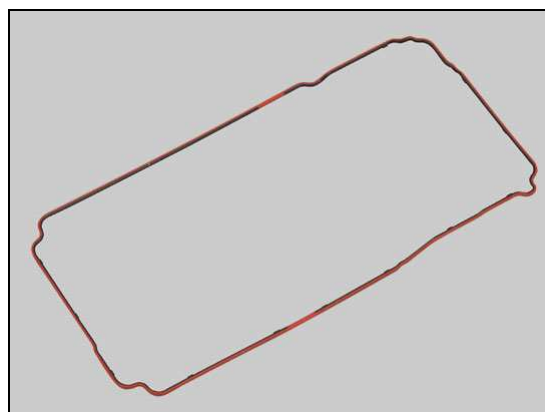
Action:

1. If dirty – clean it.
2. If not properly assembled – disassemble and reassemble it.



3. If the Main Gasket is damaged – replace it.

Run the Water Resistance Test again!



Problem Areas: Water Resistance

Check:

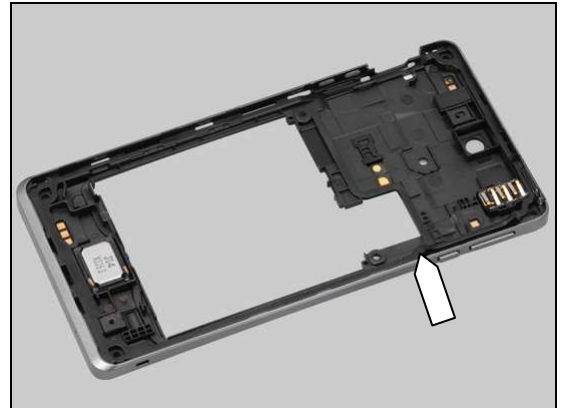
Inspect the hooks and main gasket contact surface of the Cover Rear Assy.

Action:

1. If contact surface is dirty – clean it.

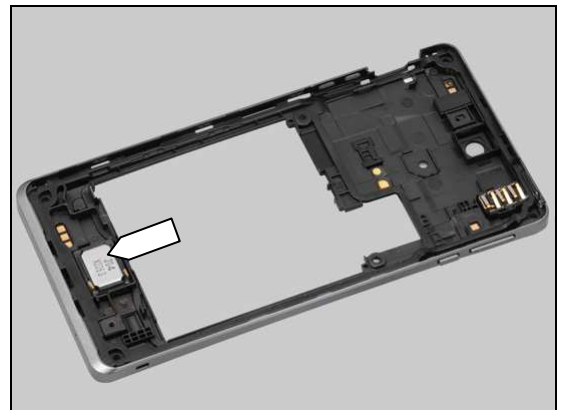
2. If the hooks or contact surface is damaged – replace the Cover Rear Assy.

Run the Water Resistance Test again!



Check:

Inspect the Loudspeaker.



Action:

1. If suspect that the Loudspeaker is not securely attached – replace it.

2. If inspect that the Loudspeaker is damaged – replace it.

Run the Water Resistance Test again!



Problem Areas: Water Resistance

Action:

If suspect that newly replaced Loudspeaker is not securely attached – press it again with the Press Tool Loudspeaker.

This action is only applicable for newly replaced Loudspeaker.

Be careful! The Loudspeaker can be pressed only twice.

Run the Water Resistance Test again!



Action:

If above inspections and actions for the Cover Rear Assy are failed – replace the Cover Rear Assy.

Run the Water Resistance Test again!



Check:

Inspect the main gasket cavity of the Touch/Display Front Cover Assy.

Action:

1. If dirty – clean it.



2. If the cavity is damaged – replace the Touch/Display Front Cover Assy.

Run the Water Resistance Test again!



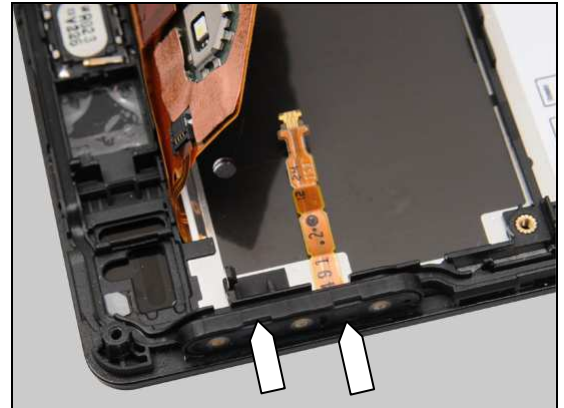
Problem Areas: Water Resistance

Check:

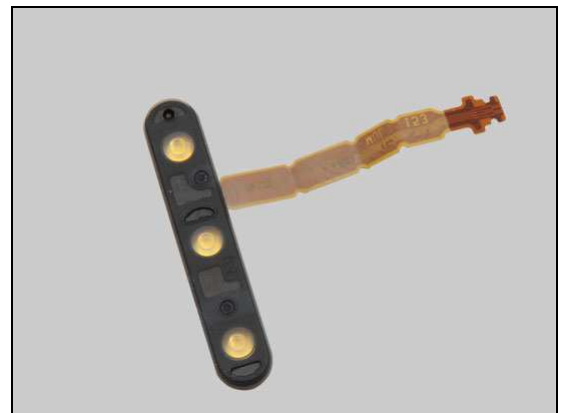
Inspect the Side Key Flex PBA Frame Assy_WR and its cavity.

Action:

1. If dirty – clean them.
2. If the Side Key Flex PBA Frame Assy_WR is not properly assembled – disassemble and reassemble it.



3. If the Side Key Flex PBA Frame Assy_WR is damaged – replace it.



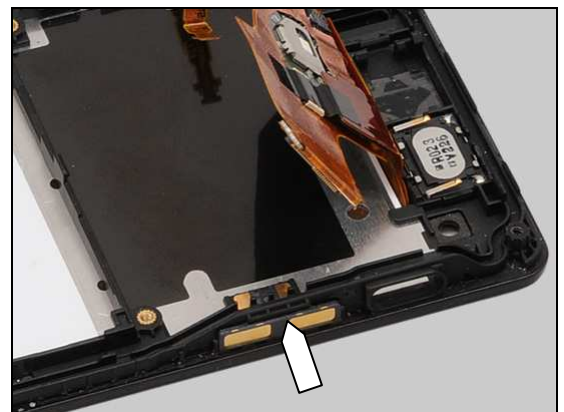
4. If the cavity is damaged – replace the Touch/Display Front Cover Assy.



Run the Water Resistance Test again!

Check:

Inspect the Charge Pad.



Problem Areas: Water Resistance

Action:

1. If suspect that the Charge Pad is not securely attached – replace it.
2. If inspect that the Charge Pad is damaged – replace it.

Run the Water Resistance Test again!



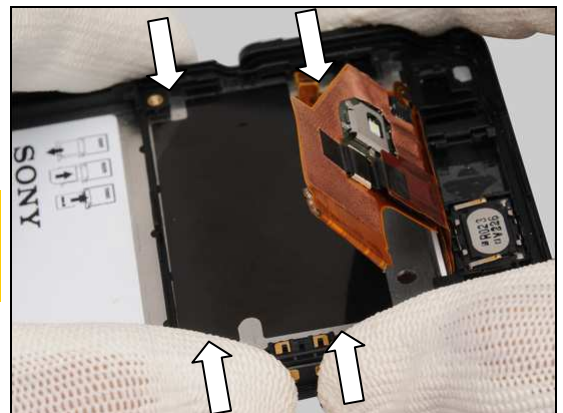
Action:

If suspect that the newly replaced Charge Pad is not securely attached – press it again.

This action is only applicable for newly replaced Charge Pad.

If this action failed, replace a new Charge Pad.

Run the Water Resistance Test again!



Check:

Inspect the Ear Speaker.



Action:

1. If suspect that the Ear Speaker is not securely attached – replace it.
2. If inspect that the Ear Speaker is damaged – replace it.

Run the Water Resistance Test again!



Problem Areas: Water Resistance

Action:

If suspect that newly replaced Ear Speaker is not securely attached – press it again with the Press Tool Earspeaker.

This action is only applicable for newly replaced Ear Speaker.

Be careful! The Ear Speaker can be pressed only twice.

Run the Water Resistance Test again!

Action:

If above inspections and actions for the Touch/Display Front Cover Assy are failed – replace the Touch/Display Front Cover Assy.

Run the Water Resistance Test again!

If the test fails, handle the unit according to your local instruction.



1.21.2 Water Resistance fails (LT25c Specific)

Check:

Inspect that the Vacuum Cup is correctly mounted to the ventilation hole.

Action:

If not properly mounted – reseal the ventilation hole with the Vacuum Cup.

Run the Water Resistance Test again!



Check:

Inspect that the secondary microphone is properly sealed with the Protection Film 2nd Mic (1266-0740).

Action:

1. If not properly sealed – reseal the secondary microphone with the Protection Film 2nd Mic (1266-0740).
2. If the Cushion 2nd Mic_WR (1262-0562) is dirty or damaged – replace it and do **not** peel off its protection film.



Problem Areas: Water Resistance

Check:

Inspect that the primary microphone is properly sealed with the Protection Film 1st Mic (1269-1565).

Action:

1. If not properly sealed – reseal the primary microphone with the Protection Film 1st Mic (1269-1565).
2. If the Cushion Sheet 1st Mic_WR (1262-0572) is damaged – replace it and do **not** peel off its protection film.

Run the Water Resistance Test again!

Check:

Inspect the equipment:

Check all tubing connections as arrows shown.

Check the Vacuum Cup sealing area and the syringe.

Check for dirt, cracks, damages.

Check direction on the valve.

Action:

1. If any bad connection – remount the equipment.
2. If damaged – replace the equipment.

3. If the arrow on the valve is not pointing to the tube connected to syringe – reconnect it in the correct direction.

Run the Water Resistance Test again!

Check:

Inspect the Cap Audio Jack.

Action:

1. If dirty – clean it.
2. If not properly assembled – disassemble and reassemble it.



Problem Areas: Water Resistance

3. If the Cap Audio Jack is damaged – replace it.

Run the Water Resistance Test again!

Check:

Inspect the Cap Micro USB.

Action:

1. If dirty – clean it.
2. If not properly assembled – disassemble and reassemble it.



3. If the Cap Micro USB is damaged – replace it.

Run the Water Resistance Test again!



Check:

Inspect the Cover Battery Assy.

Action:

1. If not properly assembled – disassemble and reassemble it.
2. If the sealing gasket is dirty – clean it.



Problem Areas: Water Resistance

3. If the sealing gasket, water resistant sheet or hooks are damaged – replace the Cover Battery Assy.

Run the Water Resistance Test again!

Check:

Inspect the battery.

Action:

1. If not properly assembled – disassemble and reassemble it.



2. If the battery is damaged or out of shape – replace it.

Run the Water Resistance Test again!



Check:

Inspect the cavity of the battery cover sealing gasket on the Cover Rear Assy.

Action:

1. If dirty – clean it.



Problem Areas: Water Resistance

2. If the cavity is damaged – replace the Cover Rear Assy.

Run the Water Resistance Test again!



Check:

Inspect the Screw Len:3.2 Diam:1.4 M.

Action:

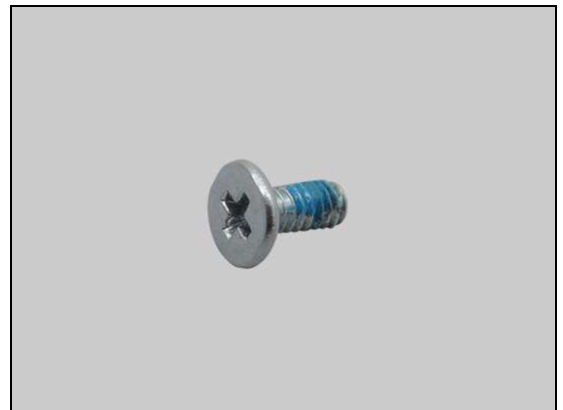
2012- If not properly assembled – reassemble them.

Do not reuse in case of disassembling!



2. If the Screw Len:3.2 Diam:1.4 M is damaged – replace it.

Run the Water Resistance Test again!



Check:

Inspect the Screw Len:5.0 Diam:1.4.

Action:

2012- If not properly assembled – reassemble them.

Do not reuse in case of disassembling!



Problem Areas: Water Resistance

2. If the Screw Len:5.0 Diam:1.4 is damaged – replace it.

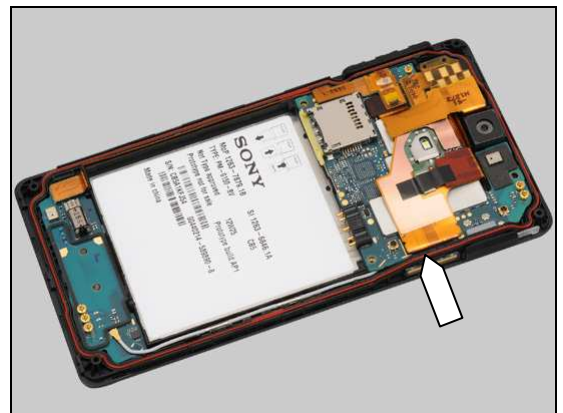
Run the Water Resistance Test again!

Check:

Inspect the Main Gasket.

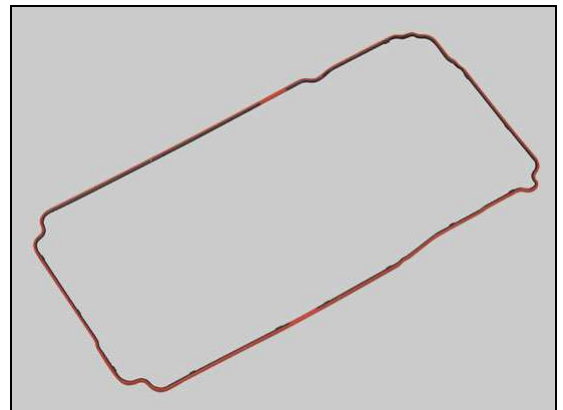
Action:

1. If dirty – clean it.
2. If not properly assembled – disassemble and reassemble it.



3. If the Main Gasket is damaged – replace it.

Run the Water Resistance Test again!

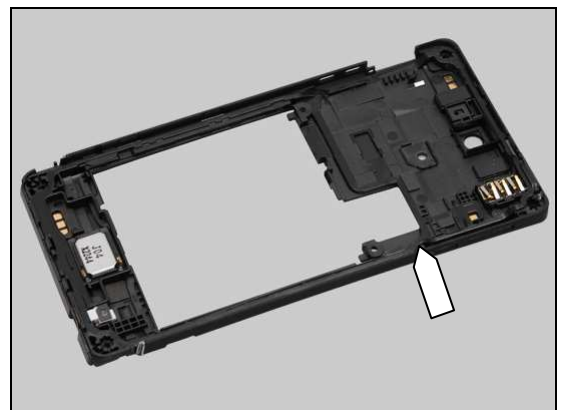


Check:

Inspect the hooks and main gasket contact surface of the Cover Rear Assy.

Action:

1. If the contact surface is dirty – clean it.



Problem Areas: Water Resistance

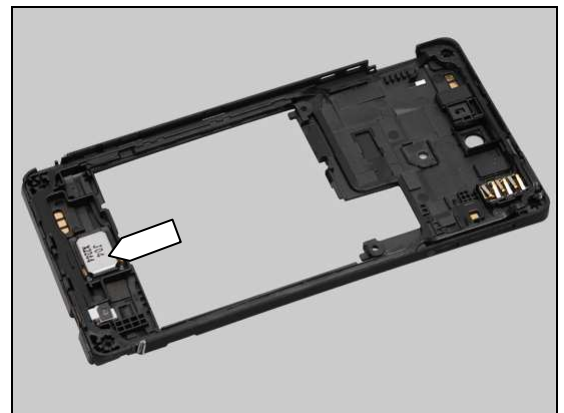
2. If the hooks or contact surface is damaged – replace the Cover Rear Assy.

Run the Water Resistance Test again!



Check:

Inspect the Loudspeaker.



Action:

1. If suspect that the Loudspeaker is not securely attached – replace it.
2. If inspect that the Loudspeaker is damaged – replace it.

Run the Water Resistance Test again!



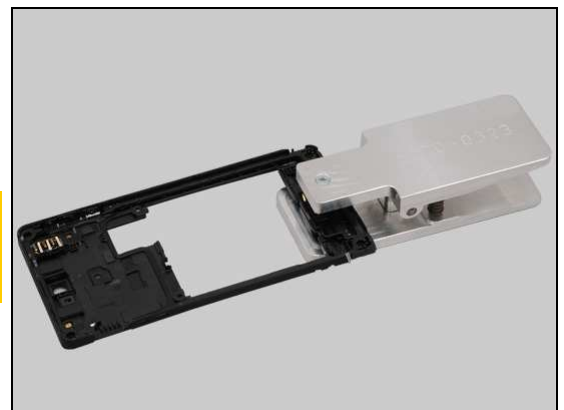
Action:

If suspect that newly replaced Loudspeaker is not securely attached – press it again with the Press Tool Loudspeaker.

This action is only applicable for newly replaced Loudspeaker.

Be careful! The Loudspeaker can be pressed only twice.

Run the Water Resistance Test again!



Problem Areas: Water Resistance

Action:

If above inspections and actions for the Cover Rear Assy are failed – replace the Cover Rear Assy.

Run the Water Resistance Test again!



Check:

Inspect the main gasket cavity of the Touch/Display Front Cover Assy.

Action:

1. If dirty – clean it.



2. If the cavity is damaged – replace the Touch/Display Front Cover Assy.

Run the Water Resistance Test again!



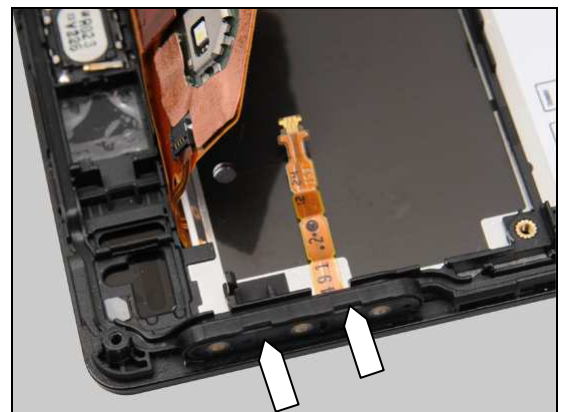
Check:

Inspect the Side Key Flex PBA Frame Assy_WR and its cavity.

Action:

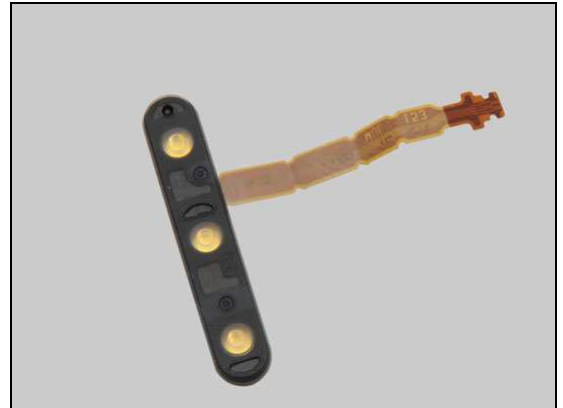
1. If dirty – clean them.

2. If the Side Key Flex PBA Frame Assy_WR is not properly assembled – disassemble and reassemble it.



Problem Areas: Water Resistance

3. If the Side Key Flex PBA Frame Assy_WR is damaged – replace it.

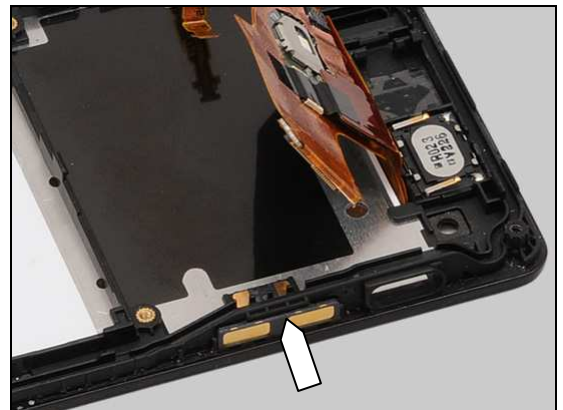


4. If the cavity is damaged – replace the Touch/Display Front Cover Assy.



Run the Water Resistance Test again!

Check:
Inspect the Charge Pad.



Action:
1. If suspect that the Charge Pad is not securely attached – replace it.
2. If inspect that the Charge Pad is damaged – replace it.

Run the Water Resistance Test again!



Problem Areas: Water Resistance

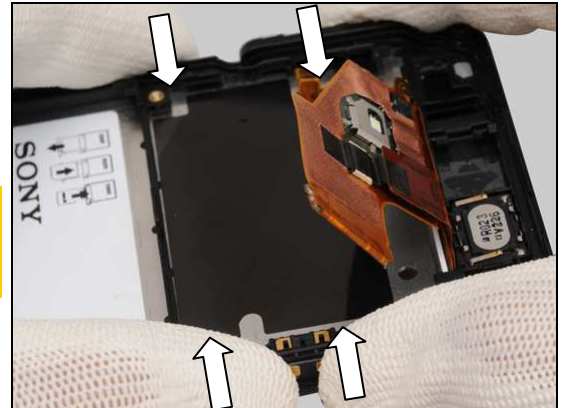
Action:

If suspect that the newly replaced Charge Pad is not securely attached – press it again.

This action is only applicable for newly replaced Charge Pad.

If this action failed, replace a new Charge Pad.

Run the Water Resistance Test again!



Check:

Inspect the Ear Speaker.



Action:

1. If suspect that the Ear Speaker is not securely attached – replace it.
2. If inspect that the Ear Speaker is damaged – replace it.

Run the Water Resistance Test again!



Action:

If suspect that newly replaced Ear Speaker is not securely attached – press it again with the Press Tool Earspeaker.

This action is only applicable for newly replaced Ear Speaker.

Be careful! The Ear Speaker can be pressed only twice.

Run the Water Resistance Test again!



Problem Areas: Water Resistance

Action:

If above inspections and actions for the Touch/Display Front Cover Assy are failed – replace the Touch/Display Front Cover Assy.

Run the Water Resistance Test again!

If the test fails, handle the unit according to your local instruction.



Problem Areas

1.22 Real Time Clock

1.22.1 Real time clock test fails

Action:

Replace Main PBA.

Problem Areas

1.23 Total call time

1.23.1 Total call time fails

Action:

Replace Main PBA.

Problem Areas

1.24 External Memory

1.24.1 Memory Card not detected

Check:

Inspect that if a memory card is properly inserted.

Action:

If not properly inserted – insert the memory card correctly.

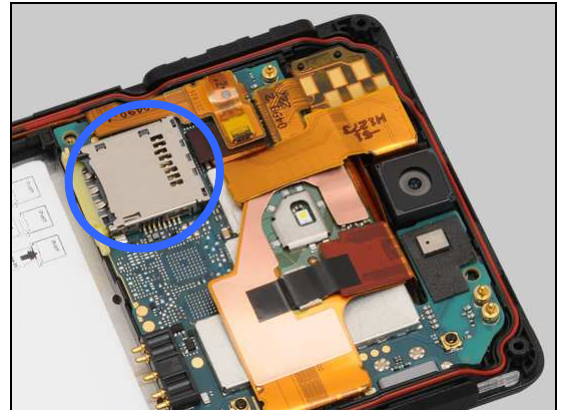


Check:

Inspect the memory card holder on Main PBA.

Action:

1. If dirty or clogged – clean the holder.
2. Replace Main PBA.



Problem Areas

1.25 Security

1.25.1 Security fails

Action:

Replace Main PBA.

Problem Areas

1.26 FM Radio

1.26.1 No/Poor FM Radio reception

Check:

Inspect the external port of the Audio Jack.

Action:

If dirty or oxidized – clean it.

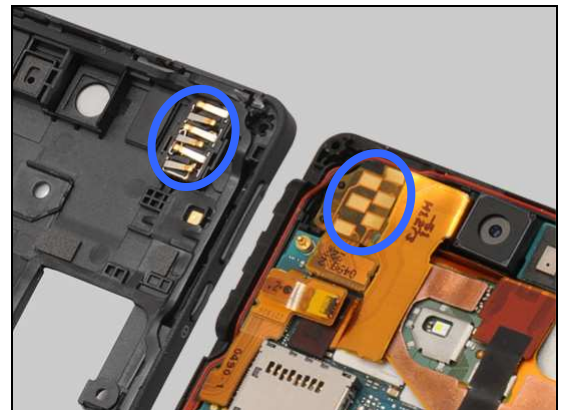


Check:

Inspect the contact pins on Audio Jack and the contact pads on the Jack Flex PBA Assy.

Action:

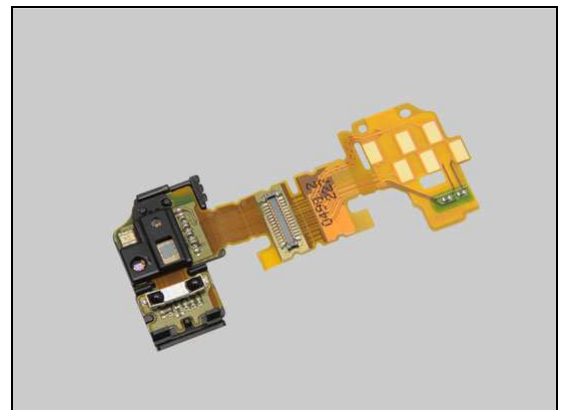
1. If dirty or oxidized – clean them.



2. If the contact pins of the Audio Jack are damaged – replace the Audio Jack.



3. If the contact pads of Jack Flex PBA Assy are damaged – replace the Jack Flex PBA Assy.



Problem Areas: FM Radio

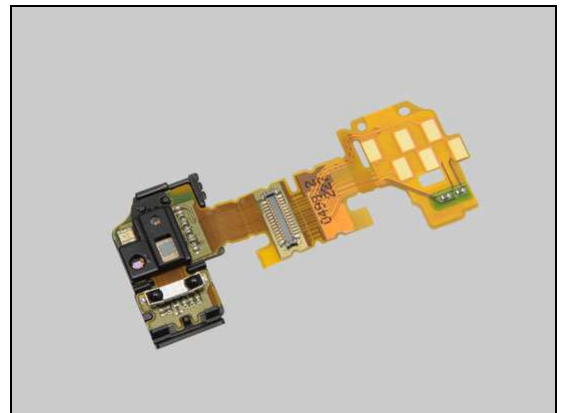
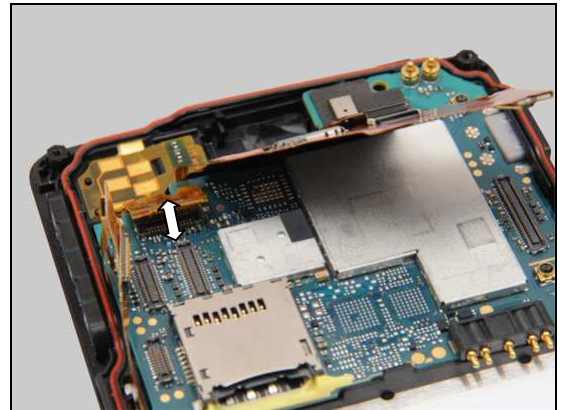
Check:

Inspect the BtB connector of Jack Flex PBA Assy to Main PBA.

Action:

1. If not properly connected – disconnect and reconnect it.
2. If dirty or oxidized – clean the both sides of the BtB connector.

3. If the BtB connector or FPC of Jack Flex PBA Assy is damaged – replace the Jack Flex PBA Assy.
4. Replace Main PBA.



Problem Areas

1.27 Battery Health test

1.27.1 Battery Health test fails

Action:

Replace the battery.

Problem Areas

1.28 Flip Slider Counter

1.28.1 Flip Slider Counter fails

Action:

N/A. Not slider phone.

Problem Areas

1.29 Verify Certificates

1.29.1 Verify Certificates fails

Action:

Replace Main PBA.

Problem Areas

1.30 IrDA Test

1.30.1 IrDA test fails

Action:

N/A. No IrDA functionality in the phone.

Problem Areas

1.31 TV-Out Test

1.31.1 TV-Out test fails

Check:

Inspect the USB connector.

Action:

1. If dirty or oxidized – clean the connector.
2. Replace Main PBA.



Problem Areas

1.32 Network & Signal

1.32.1 No/Poor signal (LT25i Specific)

Check:

Inspect the main antenna on the Cover Rear Assy.

Action:

If the main antenna is damaged – replace the Cover Rear Assy.

Check:

Inspect the main antenna contact pins on Sub PBA Assy and contact pads on the Cover Rear Assy.

Action:

1. If dirty or oxidized – clean the pins and pads.

2. If the contact pads are damaged – replace the Cover Rear Assy.



Problem Areas: Network & Signal

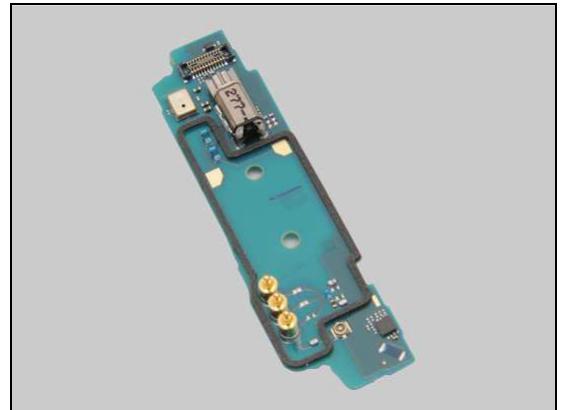
3. If the contact pins on Sub PBA Assy are damaged – replace the Sub PBA Assy.

Check:

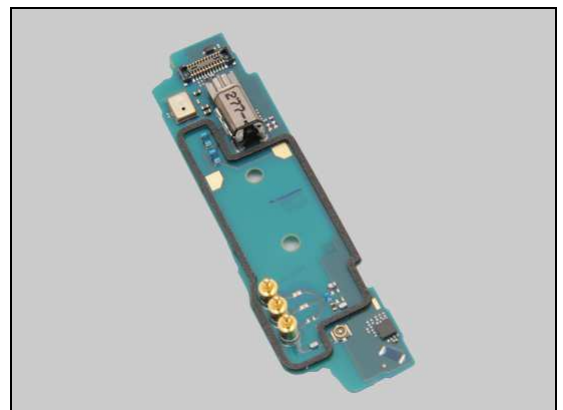
Inspect the connector of Cable RF to Sub PBA Assy.

Action:

1. If not properly connected – disconnect and reconnect it.



2. If the connector on Sub PBA Assy is damaged – replace the Sub PBA Assy.

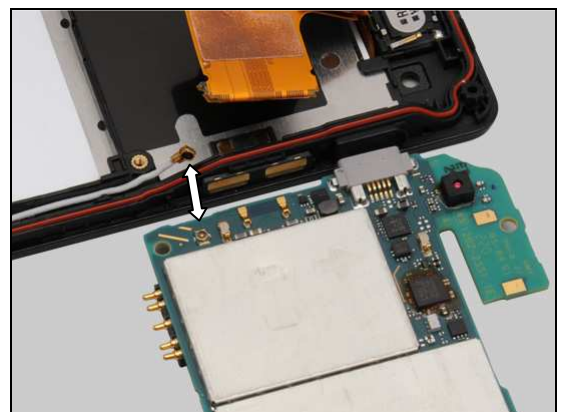


Check:

Inspect the connector of Cable RF to Main PBA.

Action:

1. If not properly connected – disconnect and reconnect it.



Problem Areas: Network & Signal

2. If the Cable RF or either of the both connectors is damaged – replace the Cable RF.
3. Replace Main PBA.



Check:

Inspect the contact pins on Main PBA and contact pads on Ant Diversity Flex.

Action:

1. If dirty or oxidized – clean the pins and pads.



2. If the contact pads are damaged – replace the Ant Diversity Flex.
3. Replace Main PBA.



1.32.2 No/Poor signal (LT25c Specific)

Check:

Inspect the main antenna on the Cover Rear Assy.



Problem Areas: Network & Signal

Action:

If the main antenna is damaged – replace the Cover Rear Assy.

Check:

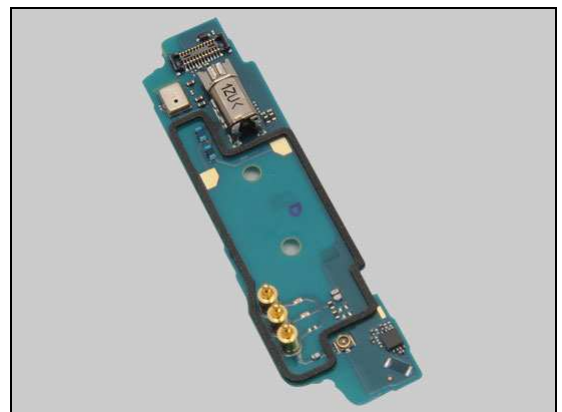
Inspect the main antenna contact pins on Sub PBA Assy and contact pads on the Cover Rear Assy.

Action:

1. If dirty or oxidized – clean the pins and pads.

2. If the contact pads are damaged – replace Cover Rear Assy.

3. If the contact pins on Sub PBA Assy are damaged – replace the Sub PBA Assy.



Problem Areas: Network & Signal

Check:

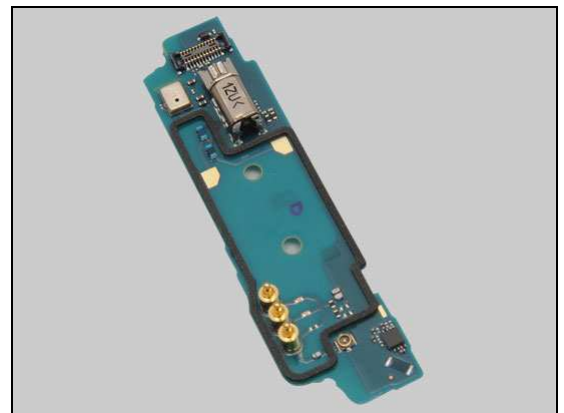
Inspect the connector of Cable RF to Sub PBA Assy.

Action:

1. If not properly connected – disconnect and reconnect it.



2. If the connector on the Sub PBA Assy is damaged – replace the Sub PBA Assy.

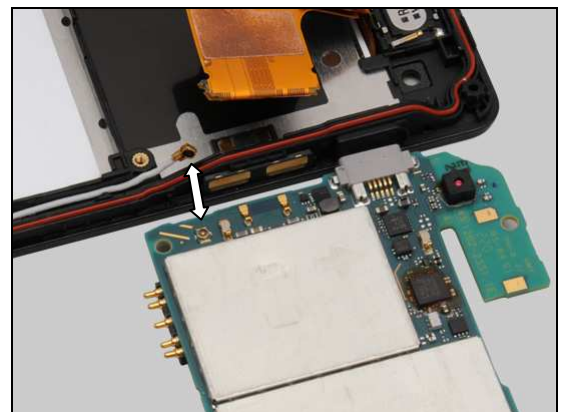


Check:

Inspect the connector of Cable RF to Main PBA.

Action:

1. If not properly connected – disconnect and reconnect it.



2. If the Cable RF or either of the both connectors is damaged – replace the Cable RF.

3. Replace Main PBA.



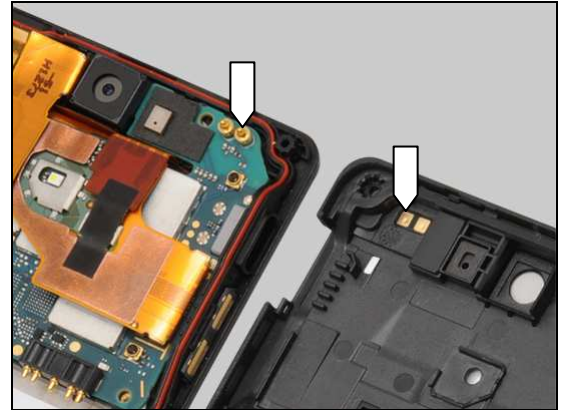
Problem Areas: Network & Signal

Check:

Inspect the contact pin on Main PBA and contact pad on Cover Rear Assy.

Action:

1. If dirty or oxidized – clean the pin and pad.
2. If the contact pad is damaged – replace Cover Rear Assy.
3. Replace Main PBA.



Problem Areas

1.33 SIM

1.33.1 SIM not detected

Check:

Inspect the external port of the SIM card holder and check if a SIM card can be properly inserted.

Action:

If dirty or clogged – clean the external port.



Check:

Inspect the Card Connector Tray.

Action:

1. If dirty – clean it.
2. If damaged – replace it.



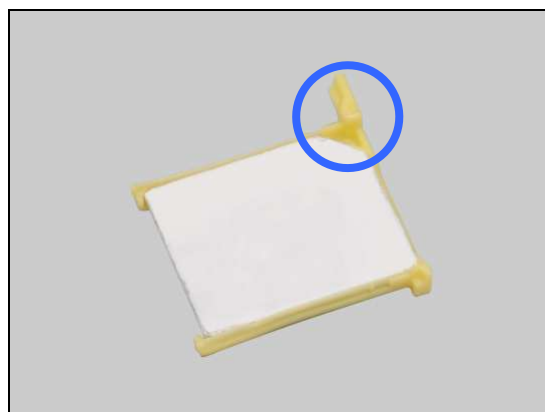
Check:

Check whether the SIM card is correctly assembled onto the Card Connector Tray and into its holder.

Action:

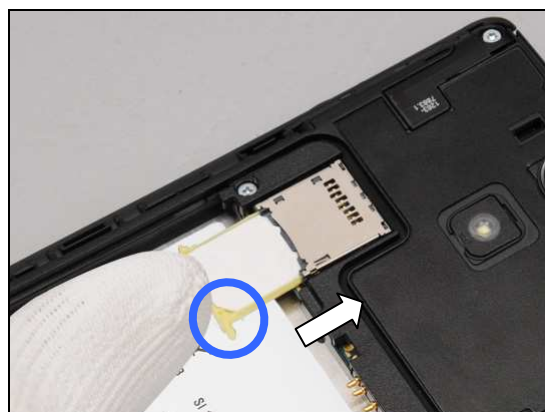
- 2012- If not properly assembled – disassemble and reassemble it.

Note the orientation of the SIM card to be assembled!



2. Insert the Card Connector Tray into the holder.

Note the orientation of the Card Connector Tray to be assembled!



Problem Areas: SIM

Check:

Inspect the SIM card holder on Main PBA.

Action:

1. If dirty or clogged – clean the holder.
2. Replace Main PBA.



1.33.2 Incorrect SIM indicated

Check:

Check whether the phone is locked to a particular operator and whether the correct operator SIM is being used.

Action:

1. Use a proper operator SIM or test SIM.
2. Replace Main PBA.



Problem Areas

1.34 Charging

1.34.1 Battery will not charge by USB connector

Check:

Inspect the contact pads of the battery.

Action:

1. If dirty or oxidized – clean the pads.
2. If the contact pads are damaged – replace the battery.



Check:

Inspect the battery contact pins.

Action:

1. If dirty or oxidized – clean the contact pins.
2. If adhesive is detected on the contact pins – use an eraser to gently rub off the adhesive.
3. If the battery contact pins are damaged – replace Main PBA.



Check:

Inspect the USB connector.

Action:

1. If dirty or oxidized – clean the connector.
2. Replace Main PBA.



1.34.2 Battery will not charge by Charge Pad

Check:

Inspect the contact pads of the battery.

Action:

1. If dirty or oxidized – clean the pads.
2. If the contact pads are damaged – replace the battery.



Problem Areas: Charging

Check:

Inspect the battery contact pins.

Action:

1. If dirty or oxidized – clean the contact pins.
2. If adhesive is detected on the contact pins – use an eraser to gently rub off the adhesive.
3. If the battery contact pins are damaged – replace Main PBA.



Check:

Inspect the external port of the Charge Pad.

Action:

If dirty or oxidized – clean it.

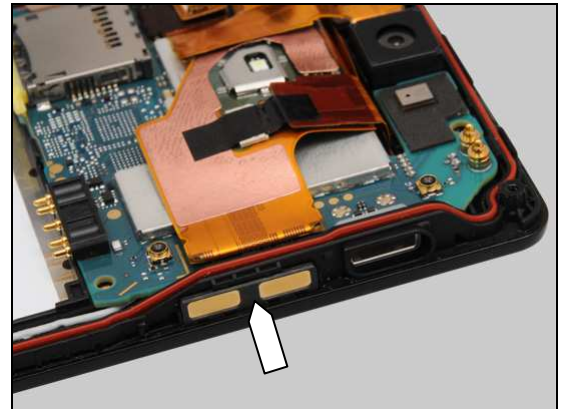


Check:

Inspect the Charge Pad.

Action:

1. If not properly assembled – replace a new Charge Pad.



2. If the Charge Pad is damaged – replace it.



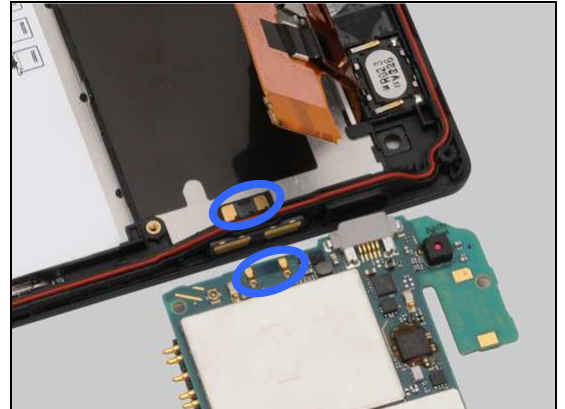
Problem Areas: Charging

Check:

Inspect the contact pins on Main PBA and pads on Charge Pad.

Action:

1. If dirty or oxidized – clean the pins and pads.
2. If the contact pads of Charge Pad are damaged – replace the Charge Pad.
3. Replace Main PBA.



Problem Areas

1.35 HandsFree by Wire

1.35.1 Connection to portable Handsfree fails

Check:

Inspect the external port of the Audio Jack.

Action:

If dirty or oxidized – clean the connector.



Check:

Inspect the contact pins on the Audio Jack and the contact pads on the Jack Flex PBA Assy.

Action:

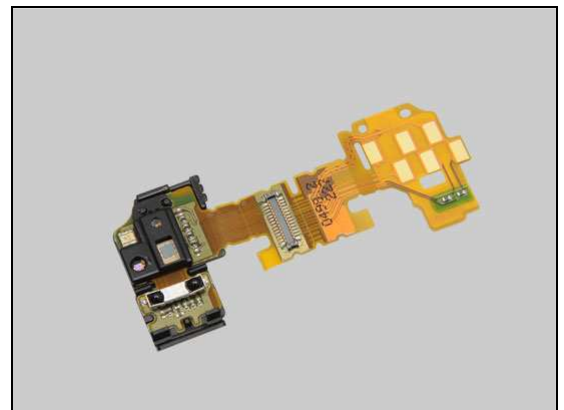
1. If dirty or oxidized – clean the pins and pads.



2. If the contact pins on the Audio Jack are damaged – replace the Audio Jack.



3. If the contact pads of the Jack Flex PBA Assy are damaged – replace the Jack Flex PBA Assy.



Problem Areas: HandsFree by Wire

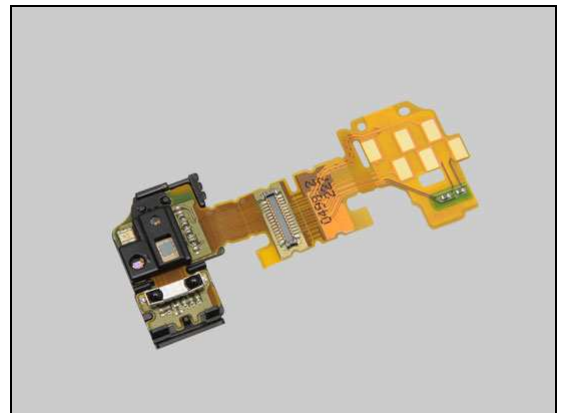
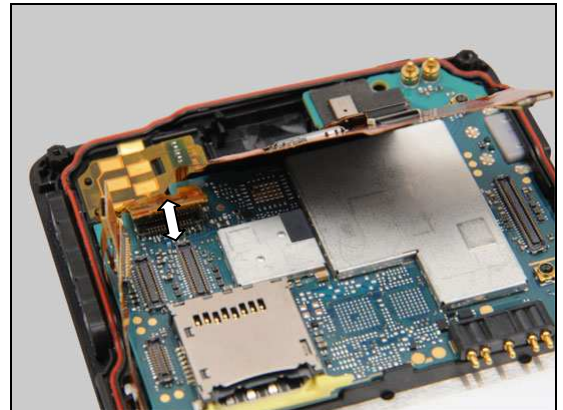
Check:

Inspect the BtB connector of the Jack Flex PBA Assy to Main PBA.

Action:

1. If not properly connected – disconnect and reconnect it.
2. If dirty or oxidized – clean the both sides of the BtB connector.

3. If the BtB connector or FPC of the Jack Flex PBA Assy is damaged – replace the Jack Flex PBA Assy.
4. Replace Main PBA.



Problem Areas

1.36 Data Communication

1.36.1 Data transfer via System Connector fails

Check:

Inspect the USB connector.

Action:

1. If dirty or oxidized – clean the connector.
2. Replace Main PBA.



2 Revision History

| Rev. | Date | Changes / Comments |
|------|-------------|---|
| 1 | 2012-Nov-16 | Initial release |
| 2 | 2012-Dec-26 | Update chapter 1.11 for Sheet Shield Noncell |
| 3 | 2013-Feb-25 | Add " and LCD reset" in the notice after contents |